

# Standard Issues

ARGE 2007 Conference

Berlin, 20-21 September 2007



THE EUROPEAN FEDERATION OF ASSOCIATIONS OF LOCK AND BUILDERS HARDWARE MANUFACTURERS  
ARBEITSGEMEINSCHAFT DER VERBANDE DER EUROPÄISCHEN SCHLOSS - UND BESCHLAGINDUSTRIE  
FEDERATION EUROPEENE DES ASSOCIATIONS DE FABRICANTS DE SERRURES ET FERRURES

# ARGE WG C - Members

Name	Name
<b>Alessandro Brunelli</b> ANIMA ASSOFERMA Italy	<b>Markus Kornhofer</b> KABA GEGE GmbH, Austria
<b>Antoine Decayeux</b> DECAYEUX, France	<b>Inge Liden</b> ASSA AB, Sweden
<b>Michele Di Geronimo</b> CLAVES International Sweden	<b>Stefan Penz</b> EVVA-WERK GmbH, Austria
<b>Paul Duggan</b> Bodycote Warrington APT Laboratories Ltd, UK	<b>Alfred Scheurer,</b> General Secretary of ARGE, Switzerland
<b>Stefan Ehrlich- Adam</b> EVVA-WERK GmbH, President of ARGE, Austria	<b>Stephan Schmidt</b> German Fachverband FVSB, Germany
<b>Heinz-Eckhard Engel</b> HOPPE AG, Italy	<b>Jan Willem van der Wal</b> ANKERSLOT, Holland
<b>Andras Horvath</b> Euro Elzett, Hungary	<b>Marijn van der Wal</b> ANKERSLOT, Holland
<b>Juan Miguel Iraeta</b> TESA, Spain	<b>Alain Varenne</b> JPM, France
<b>Norbert Jeschner</b> Guest, Germany	<b>Rudi Vrtacnik</b> TITAN, Slovenia
<b>Arjen Koole</b> VHS, Holland	<b>Malcolm White</b> Security Products UK Ltd, UK

# ARGE WG C - Report of activity

- WG C meetings
  - 31 May 2007, Paris
  - 20 Sept 2007, Berlin
- Exchange of information
  - Via e-mails
  - Direct contacts during CEN meetings
- Next meeting
  - 18 Dec 2007

# Agenda

- Standard Issues
- Particular items of interest
  - WG 4 new organisation
  - CE marking of building hardware intended for use on doors and windows which are CE marked against EN 14351-1:2006
  - Interchangeability of building hardware
  - Implementation of EN 1125 and EN 179 standards and CE marking in the EU
  - ARGE Guideline on the choice, installation and maintenance of building hardware products
- Conclusion

# Agenda

- Standard Issues (by Alain Varenne)
- Particular items of interest
  - WG 4 new organisation
  - CE marking of building hardware intended for use on doors and windows which are CE marked against EN 14351-1:2006
  - Interchangeability of building hardware
  - Implementation of EN 1125 and EN 179 and CE marking in the EU
  - ARGE Guideline on the choice, installation and maintenance of building hardware products
- Conclusion

# Background

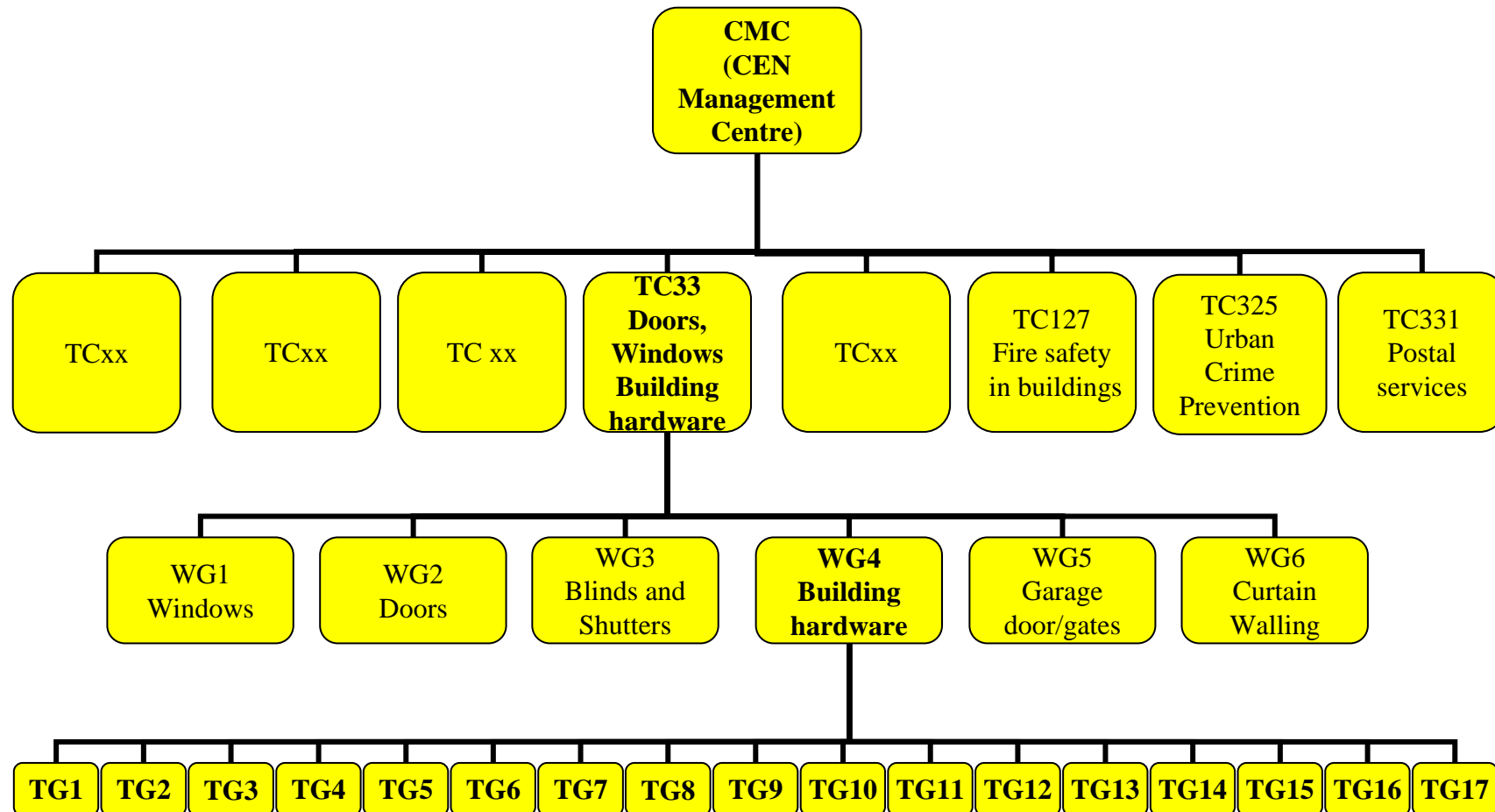
## Standards and regulations

- Standards and regulations have a direct input to our
  - Daily work
  - Current and future developments
  - Marketing
- Most ARGE companies are directly or indirectly involved
- Perceived as an unavoidable and costly burden
- We should change this attitude and see them as an opportunity for our Industry

***Standards & Regulations a part of our marketing and development strategy***

# The Route to Standards

## CEN structure





# CEN/TC33/WG4 - European Building Hardware Standards - Progress Chart

(Updated following WG4 meeting on 28th/29th March 2007)

Task Group	Number of Document	Title	Current status	Date Issued (or last update)	Harmonised	2007												2008												2009											
						J F M A M J J A S O N D												J F M A M J J A S O N D												J F M A M J J A S O N D											
TG2	EN 1670:1998	Corrosion resistance (Original standard)	Published standard	dec-98	No	published																																			
	EN 1670 revision	Corrosion resistance (1st revision)	Draft revision	2007-06	No													published (no CE marking)																							
TG3	EN 12209:2003	Mechanically operated locks (Original standard)	Published standard	sept-06	Yes	published (CE marking compulsory in most Member States)																																			
	EN 12209 revision	Mechanically operated locks (1st revision)	Preliminary draft	sept-06	Yes	drafting												pre-Enq												CEN Enq											
	prEN 14846	Electromechanically operated locks	Draft for Formal Vote	nov-06	Yes	pre-FV												FV												re-drafting											
	prEN 15685	Multipoint locks	Draft for CEN Enquiry	2007-04	Yes	pre-Enq												CEN Enq												re-drafting											
TG4	EN 1303:2005	Cylinders for locks (1st revision)	Published standard	mars-05	No	published (no CE marking)																																			
	prEN 15684	Mechatronic cylinders	Draft for CEN Enquiry	2007-06	No	pre-Enq												CEN Enq												re-drafting											
TG5	EN 1935:2002	Single axis hinges (Original standard)	Published standard	2007-04	Yes	published (CE marking compulsory in most Member States)																																			
	EN 1935 revision	Single axis hinges (1st revision)	Draft standard	?	Yes	UAP												pre-Enq												published											
TG6	EN 1154:1997	Controlled door closing devices	Published standard	mars-03	Yes	published (CE marking compulsory in most Member States)																																			
	EN 1155:1997	Elec. powered hold open devices for swing doors	Published standard	mars-03	Yes	published (CE marking compulsory in most Member States)																																			
	EN 1158:1997	Door co-ordinator devices	Published standard	mars-03	Yes	published (CE marking compulsory in most member States)																																			
	prEN 14637	Elec. controlled hold open systems	Draft standard	fevr-04	No	pre-Enq												UAP												published (no CE marking)											
	WI 33/290	Uncontrolled door closing devices (spring closers)	Preliminary draft	sept-05	Yes	drafting												pre-Enq												CEN Enq											
TG7	EN 1906:2002	Lever handles and knob furniture (Original standard)	Published standard	mars-02	No	published (no CE marking)																																			
	EN 1906 revision	Lever handles and knob furniture (1st revision)	Preliminary draft	nov-04	No	drafting												pre-Enq												CEN Enq											
TG8	EN 12051:2000	Door and window bolts	Published standard	fevr-00	No	published (no CE marking)																																			
TG10	EN 1125:1997	Panic exit devices operated by horizontal bar (Orig.std)	Published standard	oct-02	Yes	published (CE marking compulsory in most Member States)																																			
	EN 1125 revision	Panic exit devices operated by horizontal bar (1st rev.)	Draft for Formal Vote	?	Yes	pre-FV												FV												published (CE marking possible)											
	EN 179:1997	Emergency exit devices (Original standard)	Published standard	nov-02	Yes	published (CE marking compulsory in most Member States)																																			
	EN 179 revision	Emergency exit devices (1st revision)	Draft for Formal Vote	?	Yes	pre-FV												FV												published (CE marking possible)											
	prEN 13633	Electrically controlled panic exit systems	Preliminary draft	?	Yes	drafting												pre-Enq												CEN Enq											
prEN 13637	Electrically controlled exit systems (with time delay etc)	Preliminary draft	?	Yes	drafting												pre-Enq												CEN Enq												
TG11	EN 1527:1998	Hardware for sliding/folding doors	Published standard	dec-98	No	published (no CE marking)																																			
TG12	prEN12650 (1&2)	Powered pedestrian doors (2 parts)	Re-drafted standards	?	Yes	pre-Enq												UAP?												published											
TG13	TS 13126 (1-17)	Fittings for windows and door height windows	Published Stds or TS's	avr-04	No	published (no CE marking)																																			
	EN 13126 revision	Window fittings (revision to Part 7)	Draft for UAP	?	No	UAP												published (no CE marking)																							
	EN 13126 revision	Window fittings (revisions to Parts 15, 16 and 17)	Drafts for UAP	?	No	pre-Enq												UAP												published (no CE marking)											
	EN 13126 revision	Window fittings (revisions to Parts 10, 11 and 12)	Drafts for UAP	?	No	pre-Enq												UAP												published (no CE marking)											
	EN 13126 revision	Window fittings (parts 18 & 19 + revisions to other parts)	Preliminary drafts	?	No	More detailed information needed before making any predictions																																			
TG14	EN 12365:2003	Gaskets and weatherstripping (4 parts)	Published standard	oct-03	No	published (no CE marking)																																			
TG15	EN 12320:2001	Padlocks and padlock fittings (Original standard)	Published standard	mars-01	No	published (no CE marking)																																			
	EN 12320 revision	Padlocks and padlock fittings (1st revision)	Preliminary draft	?	No	drafting												pre-Enq												UAP											
TG17	WI 33/321	Door & window fittings for use by children, elderly and disabled	Draft guidance document	sept-05	No	published (no CE marking)																																			

**KEY:**

	Drafting work		Preparation for CEN Enquiry		CEN Enquiry		Preparation for Formal Vote		Formal Vote
	Unique Acceptance Procedure		Published		Published (CE marking possible)		Published (CE marking compulsory in most member states)		Published (CE marking compulsory in most member states)

NOTE: Forecast dates shown have been estimated by DHF on the basis of information currently available and may change. No responsibility can be accepted for any consequences resulting from the use of this information

## EN standards have raised problems to be solved

- Markets not prepared to use them
- EN classification system too complicated (5 to 10 digits)
- Local quality marks not yet adjusted (or removed)
- Local regulations not yet adjusted and some in conflict
- Unfair competition in a growing global market due to
  - Differences in standard interpretations by labs and NB's
  - Differences in certification procedures (Evaluation of conformity)
  - Products from the series do not always reflect ITT results
- CE marking not mandatory in all EU countries
- CE marking covers only minimum safety legal requirements (CPD "essential" requirements), not Security and Convenience market requirements / expectations
- Opens market to low cost imports (on safety requirements)

# Present status

- Most products are now covered by EN standards which are published or in the final stages... but not all of them are harmonized (CE marking)
- Many standards are in the revision process
  - A chance to improve or correct
  - New rules for evaluation of conformity
- Construction Product Directive in the revision process...

***A lot is already done, still an opportunity for influence***

## With more focus we can create advantage

- Many people (experts ... and mainly technical experts) involved in
  - EN standard development: CEN/TC 33/WG 4 and National mirror groups
  - Trade associations: ARGE, National Trade Associations
- But
  - No clear targets
    - Little involvement by Marketing people and lack of exchange
  - Lack of harmonization
    - Coordination to be improved at National and EU level
  - No common and global strategy
    - TC 33 WG 4 Action plan to be adjusted to ARGE Members common strategy

## We need a commitment to

- Improve ARGE profile and influence in other CEN groups, and EU organizations
- Improve coordination at TC 33 / WG 4 level
- Influence standard development in new areas
- Influence other standards having an impact on hardware standards (doors, fire tests, etc.)
- Support implementation of standards and CE Marking
- Work with external stakeholders on
  - Standards and Regulations
  - Quality Marks development
  - Codes of conduct and Guidelines (state of the art)



# Agenda

- Standard Issues
- Particular items of interest
  - WG 4 new organisation (by Alessandro Brunelli)
  - CE marking of building hardware intended for use on doors and windows which are CE marked against EN 14351-1:2006
  - Interchangeability of building hardware
  - Implementation of EN 1125 and EN 179 and CE marking in the EU
  - ARGE Guideline on the choice, installation and maintenance of building hardware products
- Conclusion

## WG 4 new organisation

- During the WG 4 meeting held in March 2007, CEN/TC 33/WG 4 has decided to form an Ad Hoc group of TG Convenors and Experts to establish **common positions on building hardware issues** such as:
  - Interchangeability of hardware;;
  - Guidance on selection of appropriate hardware;
  - Briefings for TC 33 Ad Hoc fire and other groups;
  - Analysis of the alignment of the existing hardware standards with those relating to doors and windows and report the results to TC 33;
  - Access for people with disabilities;
  - Etc.

## WG 4 new organisation

- The hardware industry is a supplier to the door industry and cannot ignore their requirements, and **vice-versa**;
- We need to find a common understanding in order to produce usable harmonized door and hardware standards;
- We have to find ways together to promote appropriate and better performing products to meet the needs of the markets regarding safety, security, accessibility, etc.
- WG 4 will help hardware manufacturers to liaise with WG 1+2 door manufacturers.
- Work together, not against!

# Agenda

- Standard Issues
- Particular items of interest
  - WG 4 new organisation
  - CE marking of building hardware intended for use on doors and windows which are CE marked against EN 14351-1:2006 (by Paul Duggan)
  - Interchangeability of building hardware
  - Implementation of EN 1125 and EN 179 standards and CE marking in the EU
  - ARGE Guideline on the choice, installation and maintenance of building hardware products
- Conclusion

# CE marking of building hardware intended for use on CE marked doors and windows

- Windows and **external** pedestrian door-sets without resistance to fire and/or smoke leakage characteristics **will have to be CE marked** against **EN 14351-1: 2006**;
- The mandatory date for CE marking doors and windows against EN 14351-1 is **February 2009**;
- A producer who manufactures both doors and hardware can not CE mark the hardware by fitting them to the door and testing to the door standard;
- **Hardware will still need to be tested and CE marked** against their own harmonized product standards;
- Escape route doors fall under attestation level 1 of the CPD and will be CE marked by NB's;
- Other doors fall under level 3 (Manufacturer's own declaration).

# CE marking of building hardware intended for use on CE marked doors and windows

- The hardware industry is in a very important period with other door and windows standards being drafted as harmonised standards.
- We as an industry need to increase our awareness of the work that is currently ongoing within TC 33 / WG 1 & 2 to make sure that it does not affect our business.
- We particularly **need to be active** with regards to standards that are currently being drafted by Task Groups within WG 1 & 2:
  - **prEN 14351-2: Internal** pedestrian doorsets without resistance to fire and/or smoke leakage characteristics; and
  - **prEN 14351-3:** Windows and pedestrian doorsets - part 3 - products **with resistance to fire** and smoke leakage characteristics.

# Agenda

- Standard Issues
- Particular items of interest
  - WG 4 new organisation
  - CE marking of building hardware intended for use on fire resisting doors and escape doors
  - Interchangeability of building hardware (by Alessandro Brunelli)
  - Implementation of EN 1125 and EN 179 standards and CE marking in the EU
  - ARGE Guideline on the choice, installation and maintenance of building hardware products
- Conclusion

# Interchangeability of hardware

## The issues

- Allow for more flexibility;
- Simplify the interchangeability of hardware;
- Reduce the cost of testing;

But...

- Insure the same level of safety;
- Insure the same level of performance (security, durability, etc.);
- Promote added value hardware products (performance wise)
- Insure the rules for a fair market: clearly codify the rule of interchangeability.

# Interchangeability of hardware

## The message

- Hardware manufacturers are not only concerned by hardware product standards. They are also **concerned by other standards that may have a direct implication on their own business**. For example:
  - Door standard (complete doorset)
  - Fire tests and rules of extended application
- It is important that our Hardware Industry implicates itself through the participation to CEN working groups covering these subjects, i.e.:
  - WG 4 and TC 33 Ad Hoc Groups covering Interchangeability of hardware and fire/smoke issues.
- Support your Experts in these groups.

# Interchangeability of hardware

## How to achieve this?

- Rules or requirements shall demonstrate (or acknowledge) the real contribution of hardware to the performance of doorsets.
- Requirements shall cover:
  - Ordinary doors (with a level of attestation of conformity lower than System 1, i.e. system 3)
  - Escape doors
  - Fire/smoke doors
- Requirements shall be consistent.
- Component hardware products incorporated into a doorset shall be classified against an EN standard.

# Interchangeability of hardware

## How to achieve this?

- Component hardware products incorporated into a doorset intended for Escape doors and/or Fire/smoke doors shall:
  - Meet the requirements of Annex ZA (essential requirement plus level of attestation of conformity), or
  - Possibly be CE marked, in order to simplify the verification of components installed on doorsets.

# Interchangeability of hardware

## What is the route to these requirements?

- Working groups in charge of writing standards :
  - Fire/smoke:
    - TC 127/WG 3 (EXAPS: EN 15269-1, 2 etc.)
    - TC 33 / WG 1+2 (EN 14351-3: Windows and pedestrian doorsets **with resistance to fire** and smoke leakage characteristics)
    - TC 33 Ad Hoc Fire Group
  - Escape:
    - TC 33 / WG 1+2 (EN 14351-1,-2-3: Windows and pedestrian doorsets **with and without resistance to fire** and smoke leakage characteristics intended for escape routes)
  - Ordinary doors:
    - TC 33 / WG 1+2 (EN 14351-1, -2: External and internal pedestrian doorsets **without resistance to** fire and smoke leakage characteristics not intended for escape routes)

# Interchangeability of hardware

## What to do?

- Memo on interchangeability of hardware products to be prepared by:
  - WG 4 AHG “Convenors and Experts” (AB) → WG 4 approval
- To be presented to:
  - TC 33 AHG “Fire/smoke”
  - TC 33 AHG “Interchangeability of hardware”
  - TC 127 (liaison)

# Interchangeability of hardware

## What to do?

- Position of WG 4 to be brought to TC 127
  - It is not permissible to submit a doorset to a fire test with a list of alternative hardware components that have not been previously submitted successfully to a fire test, to test only one piece of these hardware, and to obtain a test report covering the alternative hardware without further fire testing of these elements
  
  - Alternatively, it is permissible to test only the “most onerous” piece of hardware, providing that:
    - the alternative hardware components have been previously submitted successfully to a fire test,
    - the variations of the alternative hardware components, against the most onerous piece of hardware, are included in the variations which, according to the rules of extended application, don't need further fire tests

# Agenda

- Standard Issues
- Particular items of interest
  - WG 4 new organisation
  - CE marking of building hardware intended for use on doors and windows which are CE marked against EN 14351-1:2006
  - Interchangeability of building hardware
  - Implementation of EN 1125 and EN 179 standards and CE marking in the EU (by Alain Varenne)
  - ARGE Guideline on the choice, installation and maintenance of building hardware products
- Conclusion

# Implementation of EN 1125 and EN 179 and CE marking

- Present situation
  - Different situation in EU Member states :
    - Mandated EN standards published and available
    - CE marking mandatory in most countries (not all)
    - CE marked products available on the market
    - But... National Building regulations do not all refer to these standards
    - But... Specifiers do not refer to CE marked products
- Objectives
  - EN standards to be referenced in National regulations and building specifications
  - Choice of products to be defined by local authorities

# ARGE Survey

- WG C decided to conduct a survey to have a clearer picture of the present situation
- So far, 8 answers received from:
  - Norway; Germany; Austria; Italy; The Netherlands; Czech Republic; Hungary; France;

# Survey: EN 1125 and EN 179 standards

- Are EN 1125 and EN 179 officially published in your country?
- Are they translated in your national language (s)?
- Are they known by the market? Evaluate the knowledge of:

YES	NO
8	0
6	2

- Architects and specifiers:
- Contractors and Installers:
- Distributors:

No	Poor	Good	Excell
0	2	4	2
0	2	5	1
0	3	3	2

- Are exit devices sold on the market to be CE marked?

YES	NO
8	0

# Survey: National Building and/or Fire regulations

- Are EN 1125 and EN 179 standards referenced in the regulations concerning buildings with public access?
- Is it mandatory or not to use exit devices?
- If YES, are situations defined, i.e., in case of potential panic situation?
- If YES, does the regulation state how to choose from EN 1125 and EN 179 products?
- Are other products allowed, such as electrically controlled exit systems, or ordinary latches, etc.?
- If YES, what type of products ?

YES	NO
-----	----

4	4
---	---

4	3
---	---

4	0
---	---

4	0
---	---

8	0
---	---

- Electromechanicals locks, strikes, exit systems (similar to prEN 13637) ; Local standard: only in France (NF S61-937)

## Survey: What, in your opinion, could help the implementation of these standards?

- Issue Guidelines on the choice, installation and maintenance :
- National and direct discussion with National authorities:
- ARGE actions:

YES	NO
8	0
6	0
4	0

# Proposed actions...

- What to do?
  - Continue the survey; add other products;
  - Propose Guidelines to present the state of the art
  - Present results of survey to Authorities and lobby to implement standards and CE marking
- How to proceed?
  - Collect proposals from Members and prepare a draft for approval
  - ARGE PT and National Associations will present paper to targets
- Targets
  - National authorities, DG Enterprise, Members of European Parliament (MEP's)? Others?

# Agenda

- Standard Issues
- Particular items of interest
  - WG 4 new organisation
  - CE marking of building hardware intended for use on doors and windows which are CE marked against EN 14351-1:2006
  - Interchangeability of building hardware
  - Implementation of EN 1125 and EN 179 standards and CE marking in the EU
  - ARGE Guideline on the choice, installation and maintenance of building hardware products (by Alain Varenne)
- Conclusion

# ARGE Guidelines

- Objectives
  - Give state of the art information to the market on environment (regulations, standards, liability, etc.) and products, advise the market on the choice, installation and maintenance of products
    - ➔ Market education
- Scope
  - Hardware products: Exit devices, Door closing devices, Locks and cylinders, etc. and especially those covered by the Mandate
- Targets
  - All people involved in the choice, installation and maintenance of the products

# ARGE Guidelines

- How to proceed?
  - WG C will collect experience and proposals from Members and prepare a draft document
  - Once approved, document will be issued by ARGE for use by Members
  - These guidelines could be supported by CEA and endorsed by EFSAC, thus having the status of the "state of the art" documents to be used by Specifiers.
  - Make them available freely on ARGE web site!
- Time scale:
  - 09/2007: present action to ARGE Conference for approval
  - 10/2007 → 05/2008: prepare draft document(s)
  - 05/2007: circulate documents to Members for implementation at National level

# ARGE guidelines

## → Draft common structure

- Foreword
  - ARGE and National Associations: Professional expertise
  - Contribution and acknowledgements
- Introduction
  - The reasons
  - The objectives with this guidance document
  - The targets
  - The scope

# ARGE guidelines

## → Draft common structure

- 1. The environment
  - Fundamental rules
  - European Directive(s)
  - National regulations
    - Part to be developed by National Associations
  - European standards
  - Existing European and National guidelines
  - Product conformity
  - Marking and identification of products
  - **Liability**: Manufacturer (who produce); Distributor (who sell); Specifier (who choose); Installer (who install); Maintenance (who maintain); User (who use)
  - Information and training

# ARGE guidelines

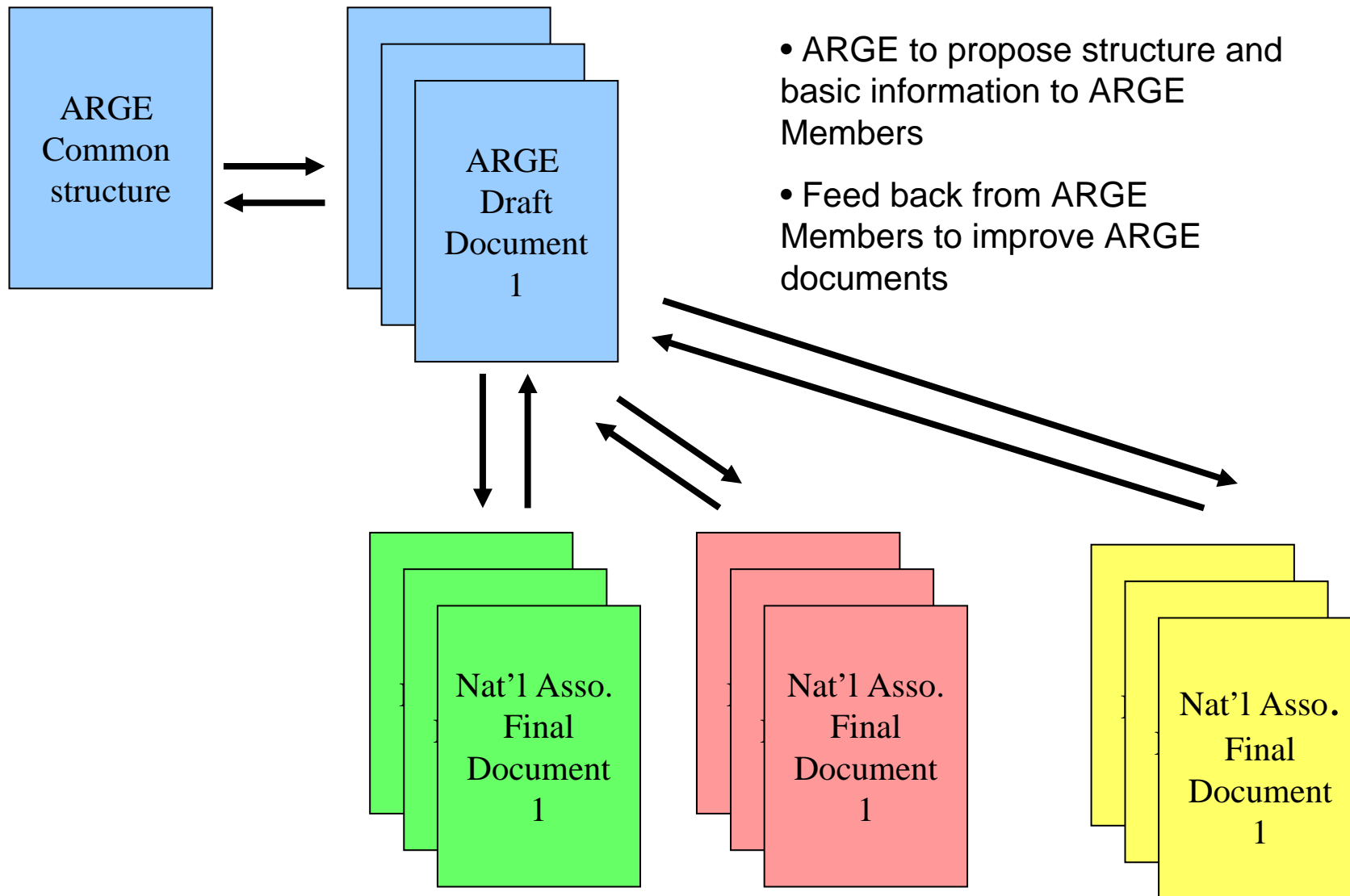
## ➔ Draft proposal for a common structure

- 2. The products available on the market
  - Main characteristics
  - Main functions and features
  - Main types of products
  - Door types(including fire/smoke resisting doors)
- 3. The choice
  - Criteria for the choice of the products
  - Recommendations by ARGE professionals
  - Do's and don't's
  - Other products for the door

# ARGE guidelines

## ➔ Draft proposal for a common structure

- 4. Installation
  - Normative and informative rules from standards
  - Recommendations by ARGE professionals
- 5. Maintenance
  - Normative and informative rules from standards
  - Recommendations by ARGE professionals
- 6. Frequently asked questions (FAQ)
- Conclusion
- Appendix
- Bibliography

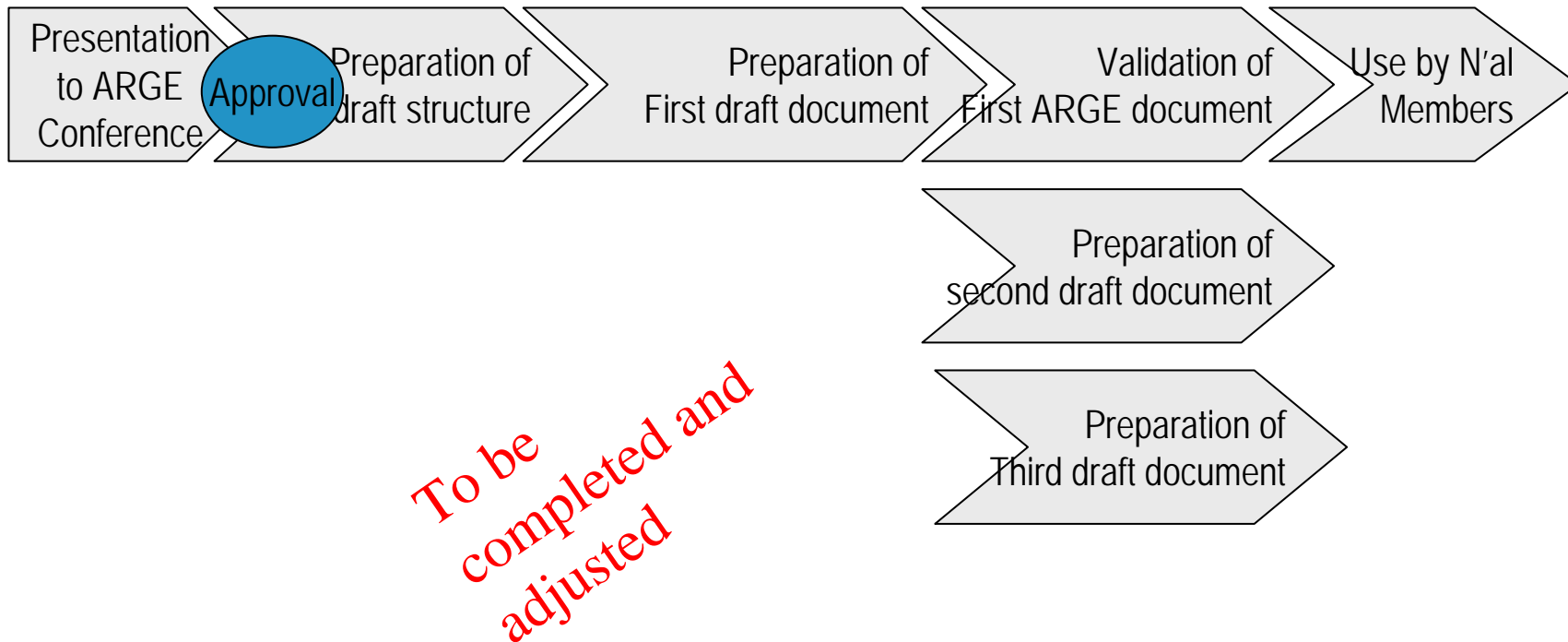


# Do's and don'ts

- Do
  - Share common information
  - Benefit from experience of ARGE Members
  - Help Nat'l Associations to develop their own guidelines
  - Let ARGE Members to adapt documents to local needs
  - Build up common ARGE guidelines for reference to other European organizations and to become the spokesman of our industry
  
- Don't
  - Do not delay the work of ARGE Members
  - Do not impose information that is not relevant to the country

# Next steps?

Sept	Oct	Nov	Dec	Janv	Fev	Mars	Avril	Mai	Juin	Etc.
------	-----	-----	-----	------	-----	------	-------	-----	------	------



# Agenda

- Standard Issues
- Particular items of interest
  - WG 4 new organisation
  - CE marking of building hardware intended for use on doors and windows which are CE marked against EN 14351-1:2006
  - Interchangeability of building hardware
  - Implementation of EN 1125 and EN 179 standards and CE marking in the EU
  - ARGE Guideline on the choice, installation and maintenance of building hardware products
- Conclusion

# Conclusion

- We need support
  - To continue to influence the standards and regulations
  - To prepare the market to use the existing and coming standards and regulations
  - To clarify our message (s) to the market
- Each individual company should
  - incorporate standards and regulatory issues within their marketing and development strategy
  - Identify a contact person in each company to co-ordinate standards and regulatory issues
  - Send contribution to ARGE WG C and CEN groups (through mirror committees)
- Don't wait for others to do the job! Be involved and proactive!

Thank You



THE EUROPEAN FEDERATION OF ASSOCIATIONS OF LOCK AND BUILDERS HARDWARE MANUFACTURERS  
ARBEITSGEMEINSCHAFT DER VERBANDE DER EUROPAISCHEN SCHLOSS - UND BESCHLAGINDUSTRIE  
FEDERATION EUROPEENE DES ASSOCIATIONS DE FABRICANTS DE SERRURES ET FERRURES



# Annexes

(to be distributed only)



THE EUROPEAN FEDERATION OF ASSOCIATIONS OF LOCK AND BUILDERS HARDWARE MANUFACTURERS  
ARBEITSGEMEINSCHAFT DER VERBANDE DER EUROPÄISCHEN SCHLOSS - UND BESCHLAGINDUSTRIE  
FEDERATION EUROPEENE DES ASSOCIATIONS DE FABRICANTS DE SERRURES ET FERRURES

# ARGE WG C - Definition and objectives

- ARGE WG C is an ARGE task group designed to
  - Inform and advise ARGE Members and companies
  - Influence the stakeholders
  - Help ARGE companies
    - To drive the market to higher security, safety and convenience
    - To segment the market through standards, CE marking and conformity marks
    - To plan ahead product changes and produce generation plans
    - To survey the market and propose actions

# ARGE WG C - Internal organization

- "Give and take" principle
- Each member to choose a topic to study as a home work (alone or together with one or more colleagues), and prepare a short presentation to be presented during the next WG C plenary meeting (5-15 minutes);
- WG C to choose from the individual presentations the subject (s) to be developed and/or presented during the next ARGE Conference
- One or two plenary meeting held each year, and a short meeting before the Conference to finalize presentations and co-ordinate the speakers
- All members to circulate directly by e-mail to other WG C members all documents of interest related to standardisation, using WG C mailing list;
- WG C to use ARGE web site to store reference documents;
- ➔ This new organisation allow for each member to be involved in standardisation work and to use WG C as a support for education.

# ARGE WG C - Scope

- Standards
  - CEN, CENELEC, ISO Hardware standardization group work,
  - Relations with other standardization groups: i.e. Door Manufacturers, Access Control, Insurance (CEA) and other EFSAC members
- Certification
  - Notified (certification) Bodies and Accredited Laboratories
  - Market surveillance,
  - CE marking and Quality marks
- Technical regulations
  - European Directives,
  - National regulations

# ARGE WG C - Items of particular interest

- Status of EN standards
- Implementation of EN standards
- Proposals for new product standards
- Accessibility
- Interchangeability of hardware
- Guidelines
- (...)