

WG B INTERNATIONAL TRADE

David Whitworth
Report June 2004

Members of WGB

- David Whitworth UK
- Marco Bandini I
- Werner Huelsken D
- Peter Hvilshoj DK
- Alfred Scheurer CH
- Martial Schneider F

PROGRAMME FOR 2004

1. To establish the commercial use of the CEN standards through information provided by the Member Associations. (Presented by Peter Hvilshoj.)
2. To consider ARGE member countries import and export values from the latest information available.
3. To consider comparisons with previous years

Statistics

Imports and Exports are analysed according to the “Combined Nomenclature” CN codes: Production by NACE 28 Codes

	Imports	Exports	Production
France	✓	✓	✓
Belgium	✓	✓	✓
Netherlands	✓	✓	✓
Germany	✓	✓	✓
Italy	✓	✓	✓
UK	✓	✓	✓
Ireland	✓	✓	✓
Denmark	✓	✓	✓
Greece	✓	✓	✗
Portugal	✓	✓	✓

Statistics (cont.)

	Imports	Exports	Production
Spain	✓	✓	✓
Sweden	✓	✓	✓
Finland	✓	✓	✓
Austria	✓	✓	✓
<hr/>			
Czech Republic	✓	✓	✓
Hungary	✓	✓	✓
Norway	✓	✓	✗
Poland	✓	✓	✓
Switzerland	✓	✓	✗

The five countries which were not in the EU for the years analysed import/export figures relate to trade with the EU only. The Norwegian and Swiss production figures are not included. The figures for these five are not added to the EU figures.

CN import/export codes used are detailed on sheet 35 of this presentation.

- ✦ To give detailed statistics is confusing for a report of this nature; the information is thus in summary form.
- ✦ All figures are thus in ECU and have 000 after each figure and the last 3 figures shown are rounded to 250

It is considered that imports from the following regions are important and the countries included in the regions are as follows:

A

The 'Old East'

Albania, Bosnia, Bulgaria, Croatia, Czech Republic, Estonia, Hungary, Poland, Romania, Serbia, Slovakia, Slovenia, Turkey

B

The Americas

USA, Canada, Mexico, Brazil

C

The Far East

China, Hong Kong, India, Malaysia, Philippines, Singapore, South Korea, Taiwan, Thailand

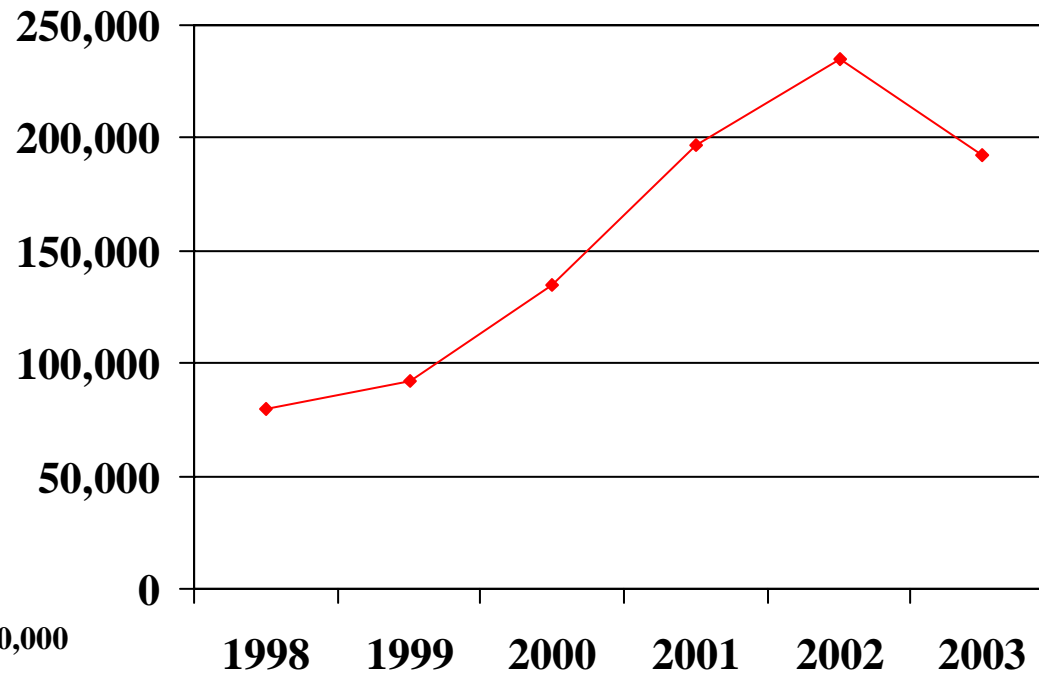
(It was decided not to include Japan as it is no longer so significant in this area.)

Countries selected:-

Figures are held for the countries listed and the following is now set out for the regions A - D

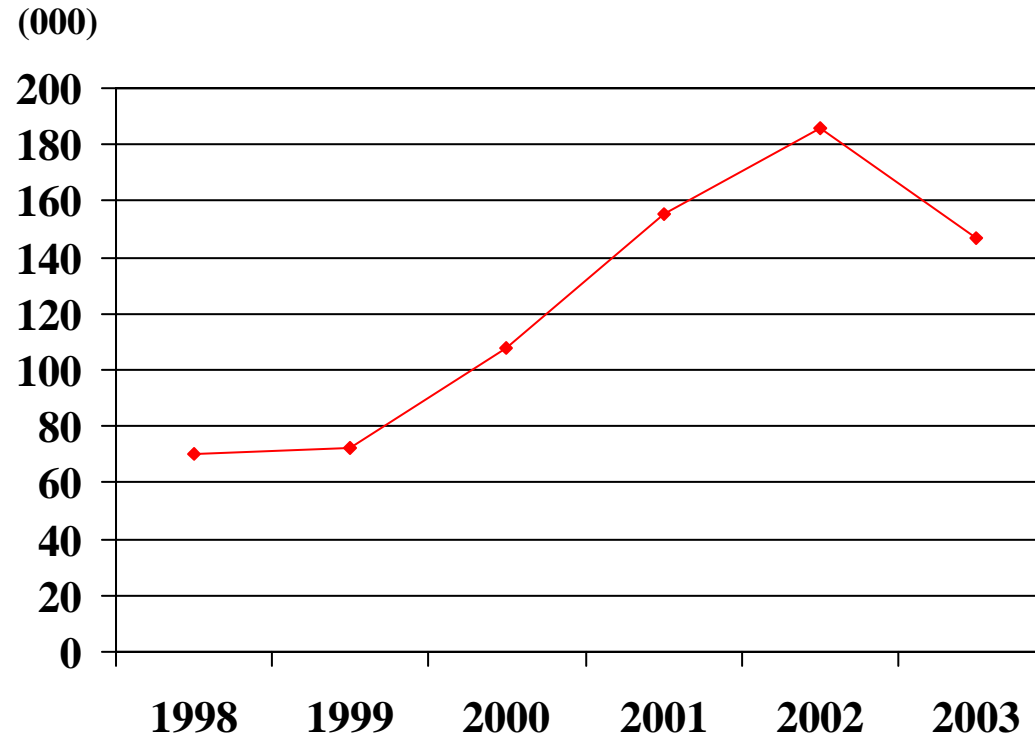
- | | | |
|---|-------------|---|
| 1 | France | Because of its size |
| 2 | Germany | Because of its size |
| 3 | Britain | An example of a 'large' open market country |
| 4 | Netherlands | An example of a 'small' open market country |
| 5 | Italy | An example of a Mediterranean country |

IMPORTS COMBINED FROM COUNTRIES 'A' – THE 'OLD EAST' – ECU 000



Totals 1998 - 80,000
1999 - 95,250
2000 - 135,000
2001 - 196,500
2002 - 234,750
2003 - 192,000

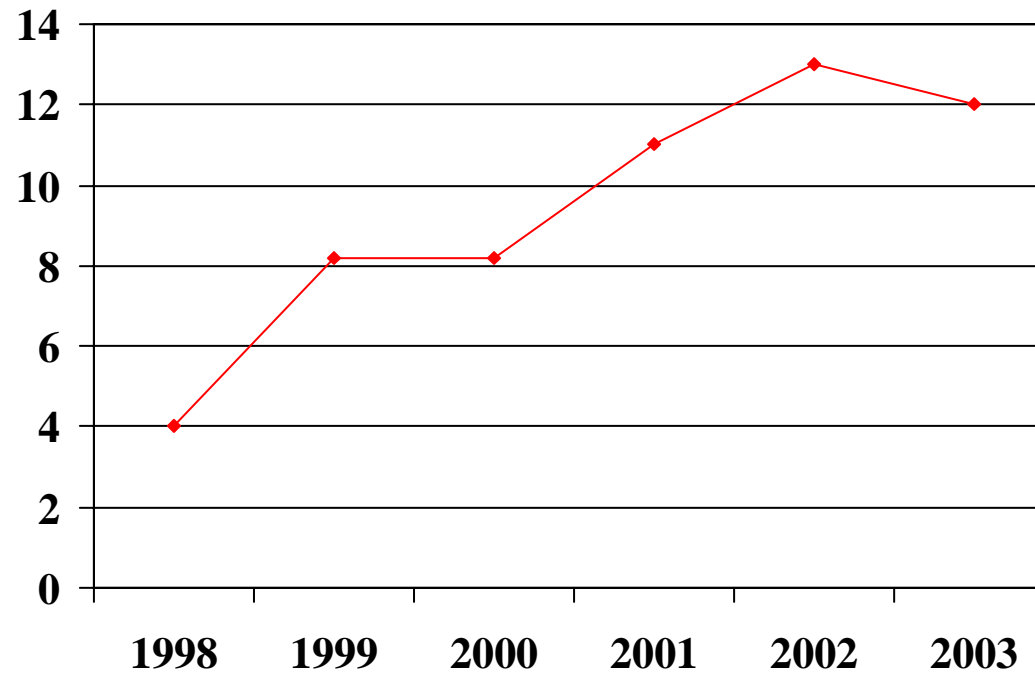
GERMAN IMPORTS FROM THE 'OLD EAST' (ECU 000)



Totals	1998	-	70,000
	1999	-	72,000
	2000	-	108,000
	2001	-	155,000
	2002	-	186,000
	2003	-	147,000

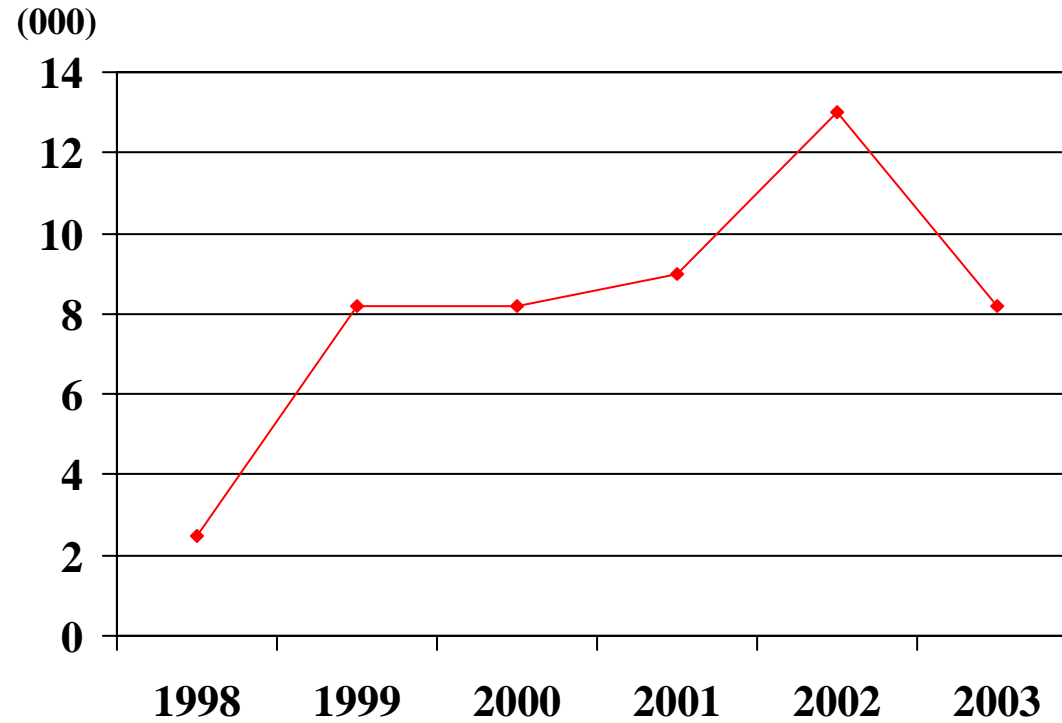
FRENCH IMPORTS FROM THE 'OLD EAST' (ECU 000)

(000)



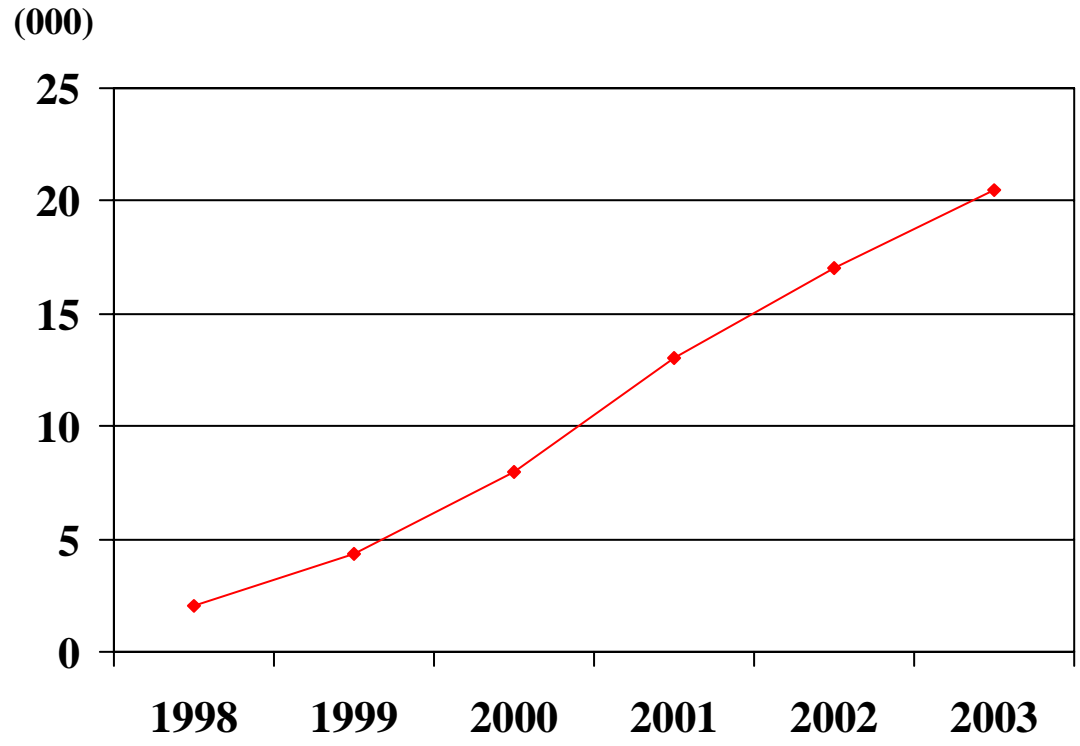
Totals 1998 - 4,000
1999 - 8,000
2000 - 8,000
2001 - 11,000
2002 - 13,000,
2003 - 12,000

UK IMPORTS FROM THE 'OLD EAST' (ECU 000)



Totals 1998 - 2,500
1999 - 8,000
2000 - 8,000
2001 - 9,000
2002 - 13,000
2003 - 8,000

ITALIAN IMPORTS FROM THE 'OLD EAST' (ECU 000)

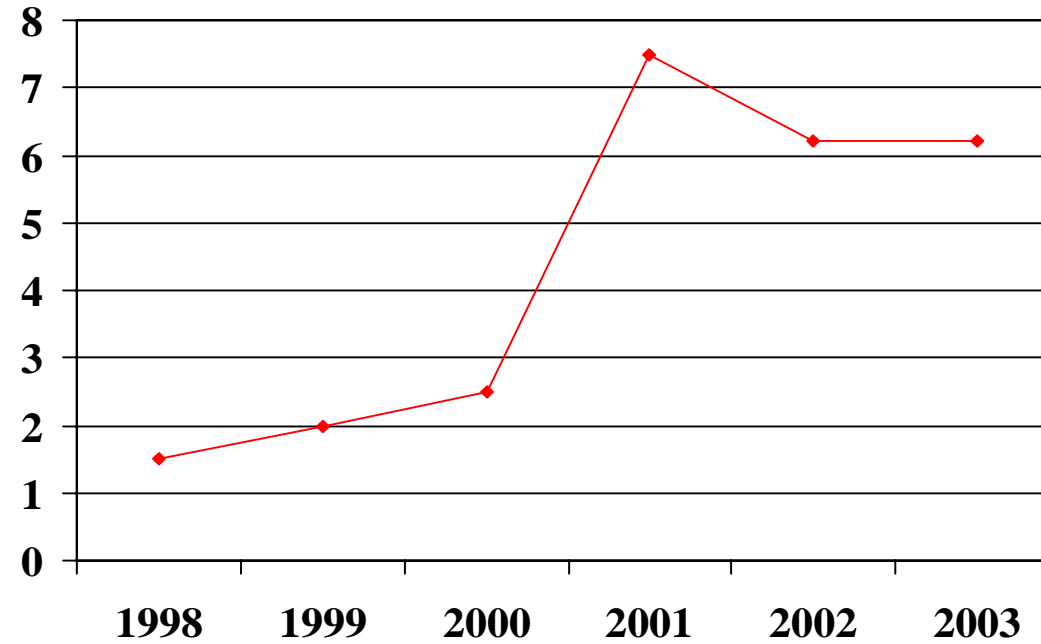


Totals	1998	-	2,000
	1999	-	4,300
	2000	-	8,000
	2001	-	13,000
	2002	-	17,000
	2003	-	20,500



DUTCH IMPORTS FROM THE 'OLD EAST' (ECU 000)

(000)



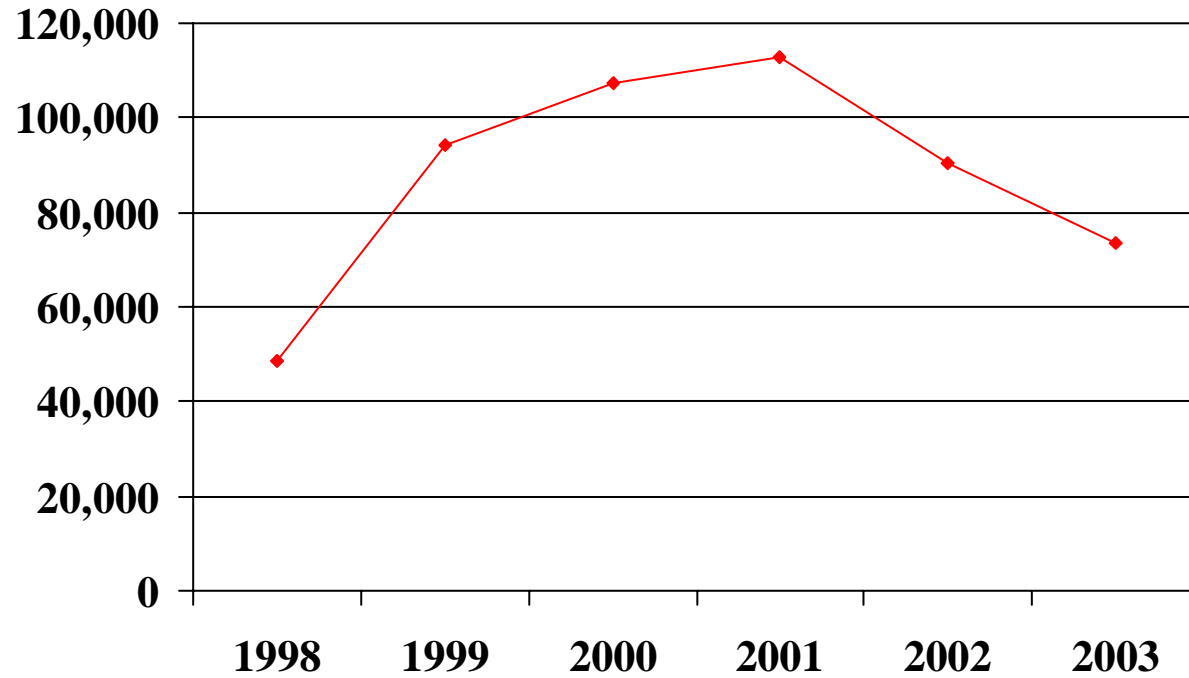
Totals 1998 - 1,500
1999 - 2,000
2000 - 2,500
2001 - 7,500
2002 - 6,000
2003 - 6,000

23-Jun-04

14

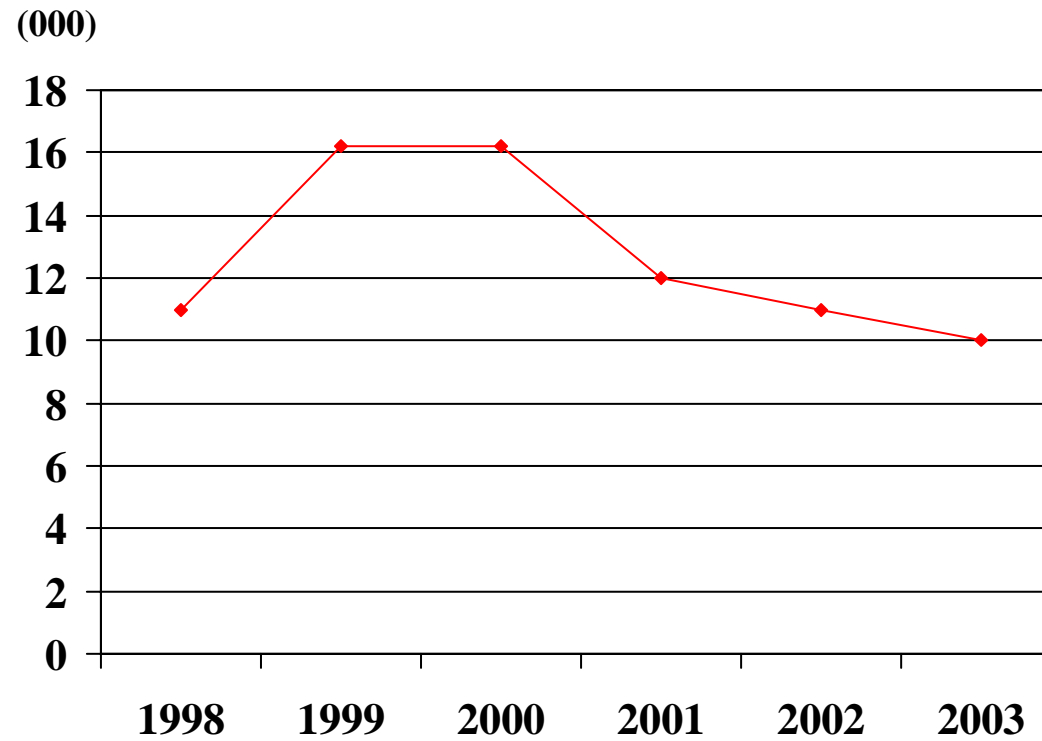


IMPORTS COMBINED FROM COUNTRIES 'B' – THE AMERICAS – ECU 000



Totals	1998	48,750
	1999	94,250
	2000	107,250
	2001	112,750
	2002	90,500
	2003	73,500

GERMAN IMPORTS FROM THE AMERICAS (ECU 000)

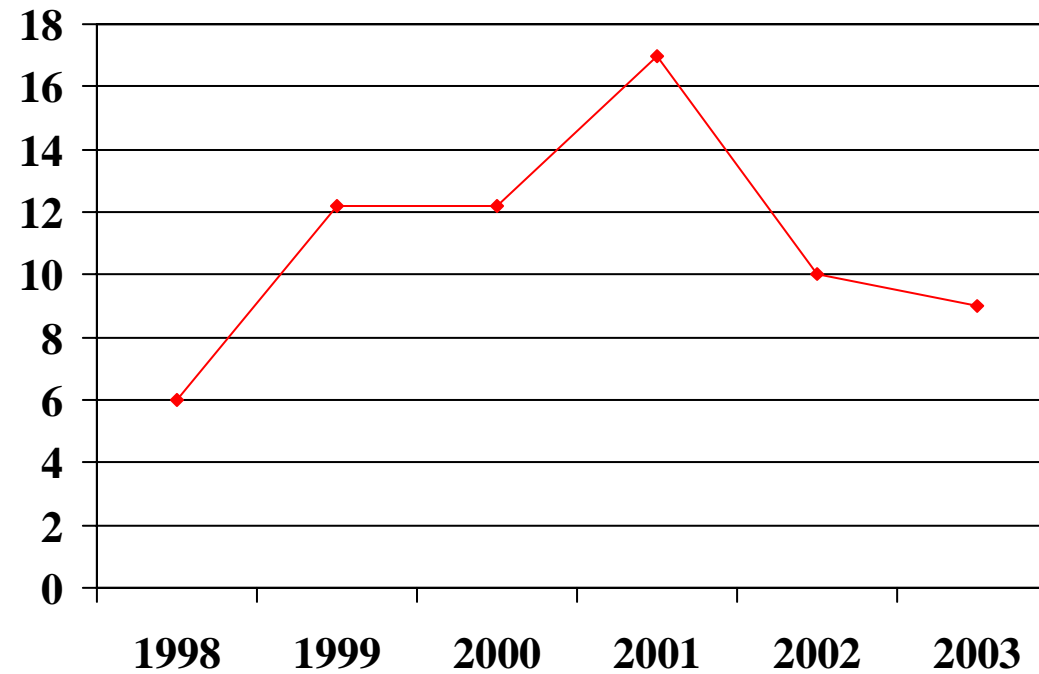


Totals	1998	-	11,000
	1999	-	16,000
	2000	-	16,000
	2001	-	12,000
	2002	-	11,000
	2003	-	10,000

23-Jun-04

FRENCH IMPORTS FROM THE AMERICAS (ECU 000)

(000)

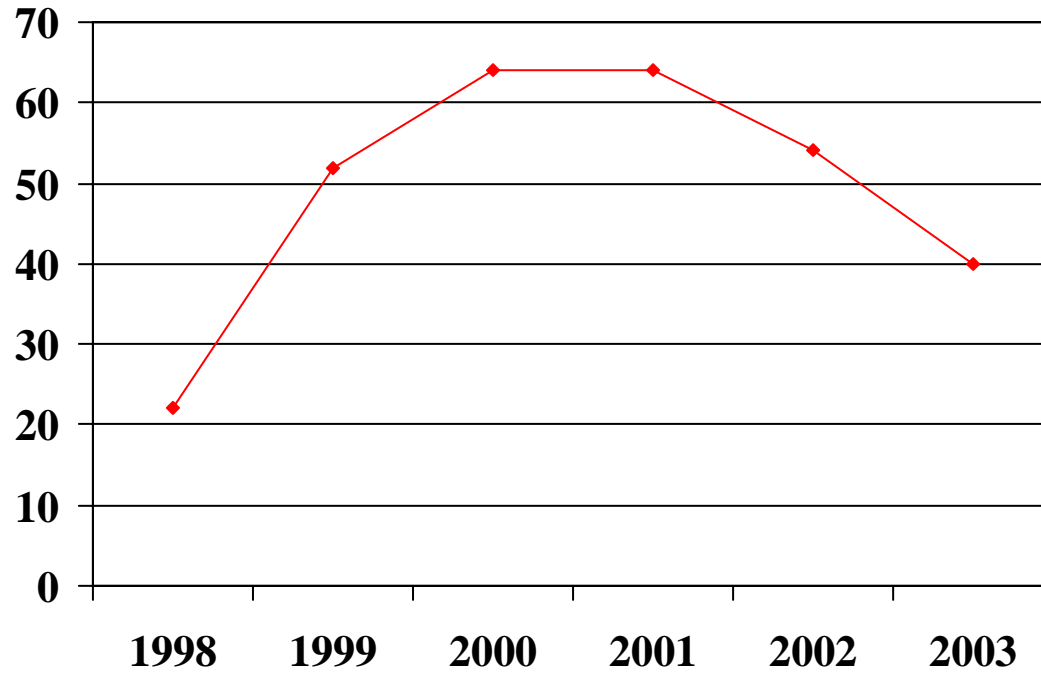


Totals	1998	-	6,000
	1999	-	12,000
	2000	-	12,000
	2001	-	17,000
	2002	-	10,000
	2003	-	9,000

23-Jun-04

UK IMPORTS FROM THE AMERICAS (ECU 000)

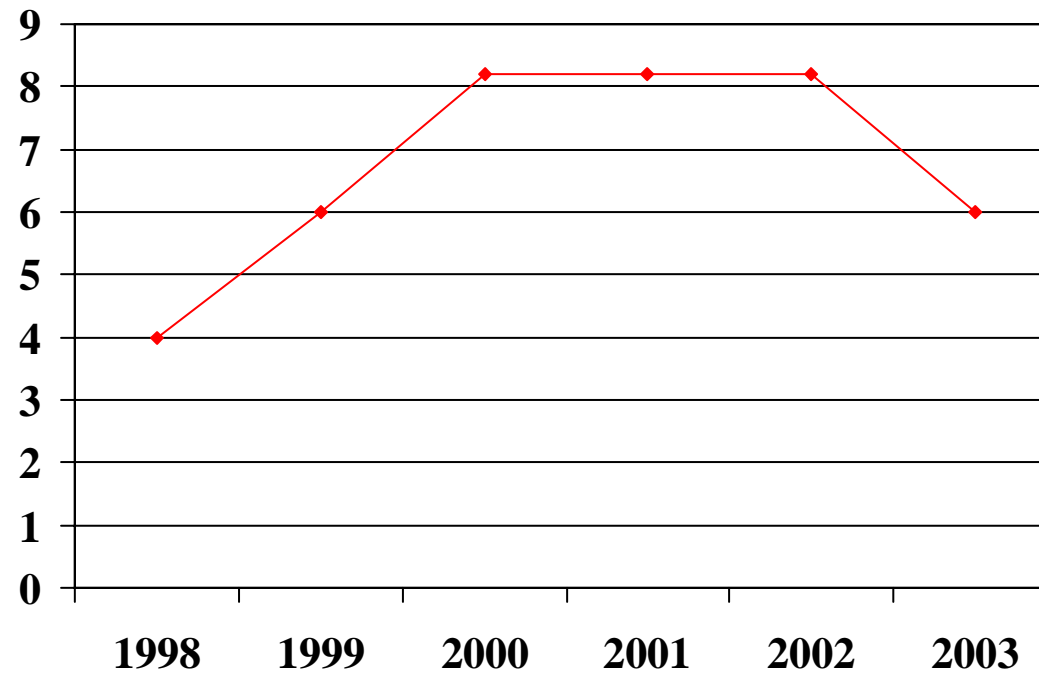
(000)



Totals	1998	-	22,000
	1999	-	52,000
	2000	-	64,000
	2001	-	64,000
	2002	-	54,000
	2003	-	40,000

ITALIAN IMPORTS FROM THE AMERICAS (ECU 000)

(000)



Totals

1998	-	4,000
1999	-	6,000
2000	-	8,000
2001	-	8,000
2002	-	8,000
2003	-	6,000

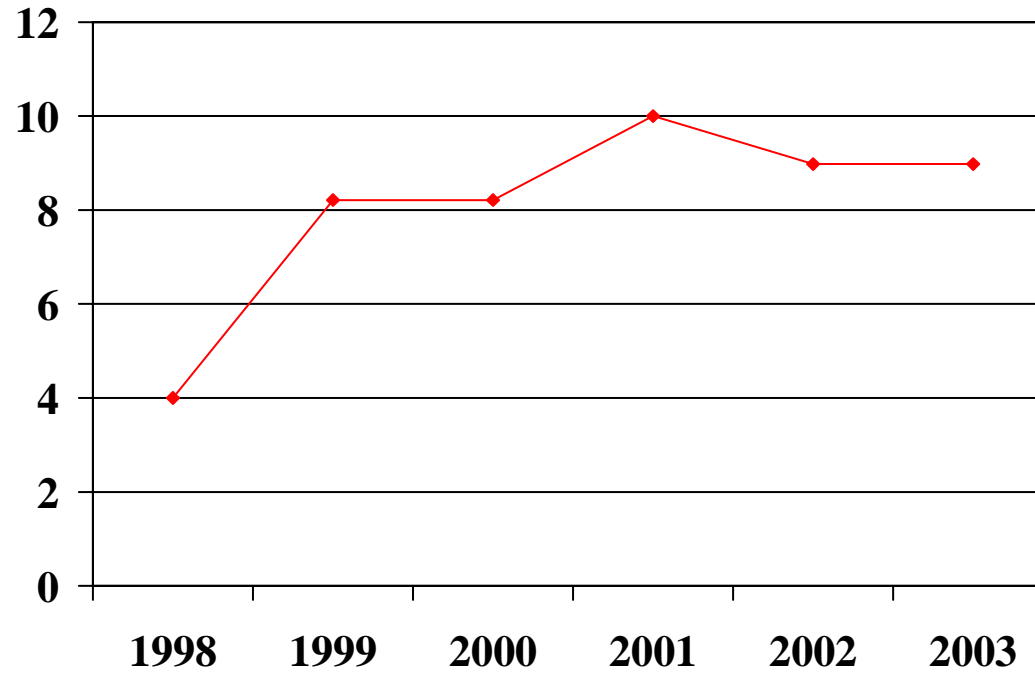
23-Jun-04

19



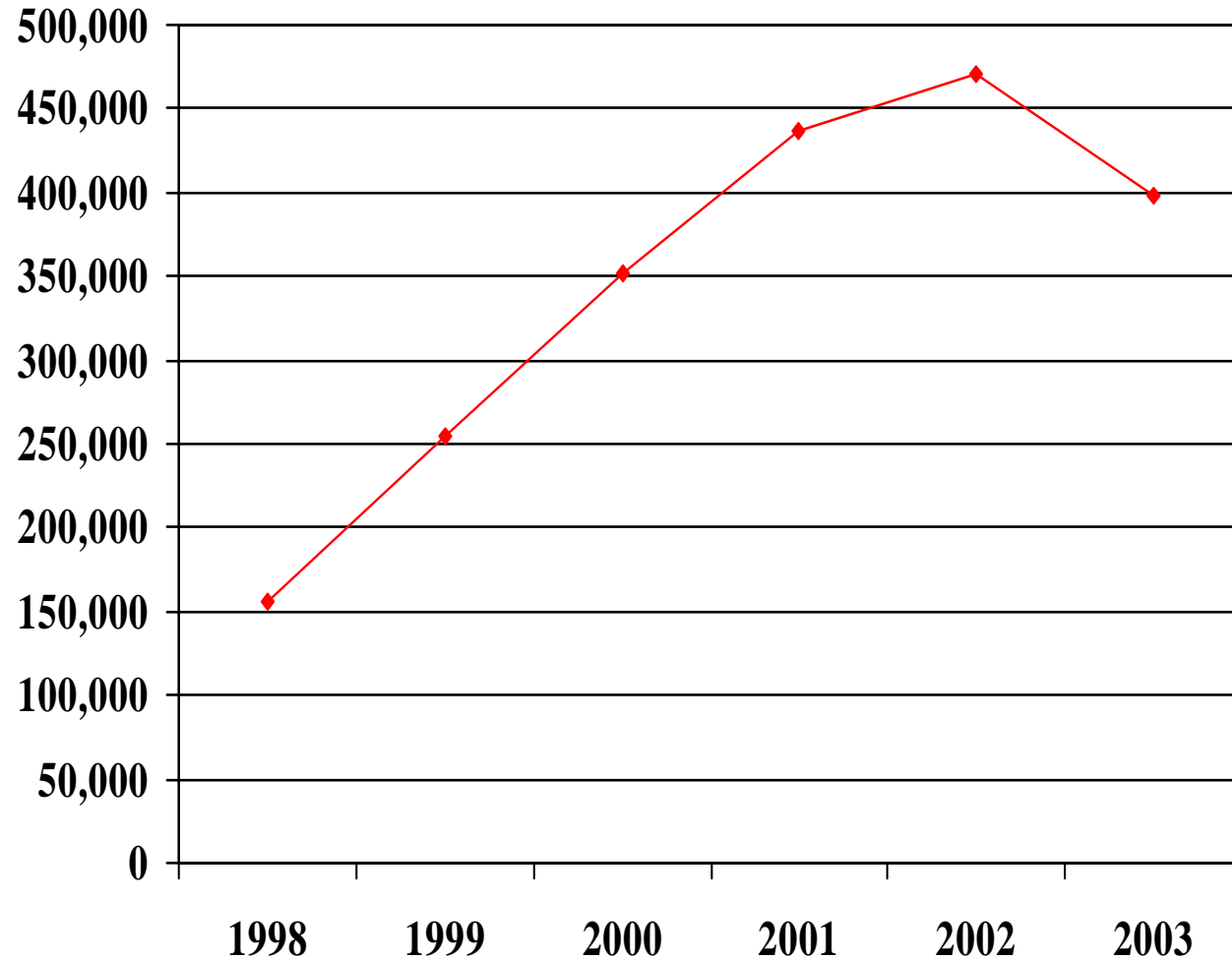
DUTCH IMPORTS FROM – THE AMERICAS (ECU 000)

(000)



Totals	1998	-	4,000
	1999	-	8,000
	2000	-	8,000
	2001	-	10,000
	2002	-	9,000
	2003	-	9,000

IMPORTS FROM COUNTRIES 'C' – THE FAR EAST 000 ECU

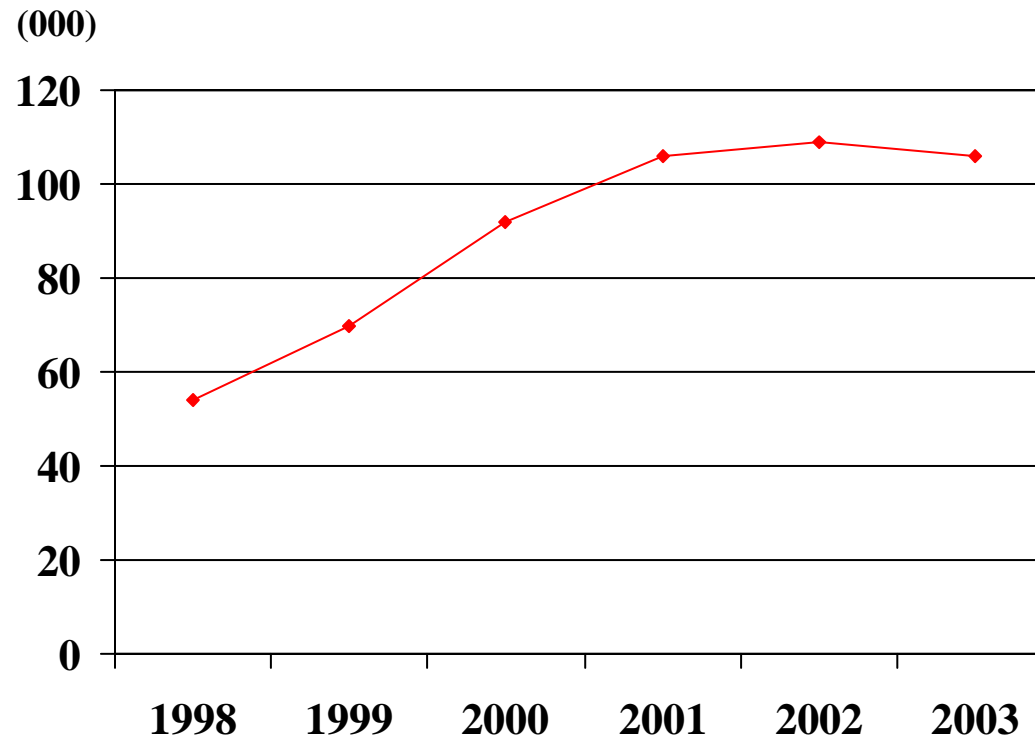


Totals 1998	156,000
1999	254,500
2000	352,500
2001	436,000
2002	471,000
2003	397,750

23-Jun-04



GERMAN IMPORTS FROM THE FAR EAST (ECU 000)

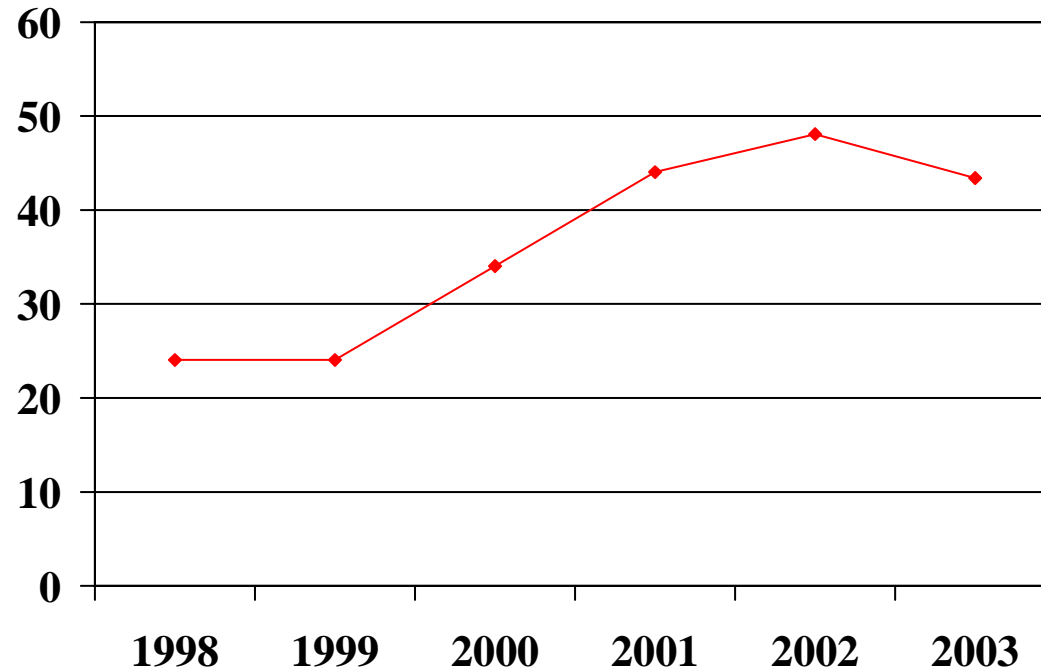


Totals	1998	-	54,000
	1999	-	70,000
	2000	-	92,000
	2001	-	106,000
	2002	-	109,000
	2003	-	106,000

23-Jun-04

FRENCH IMPORTS FROM THE FAR EAST (ECU 000)

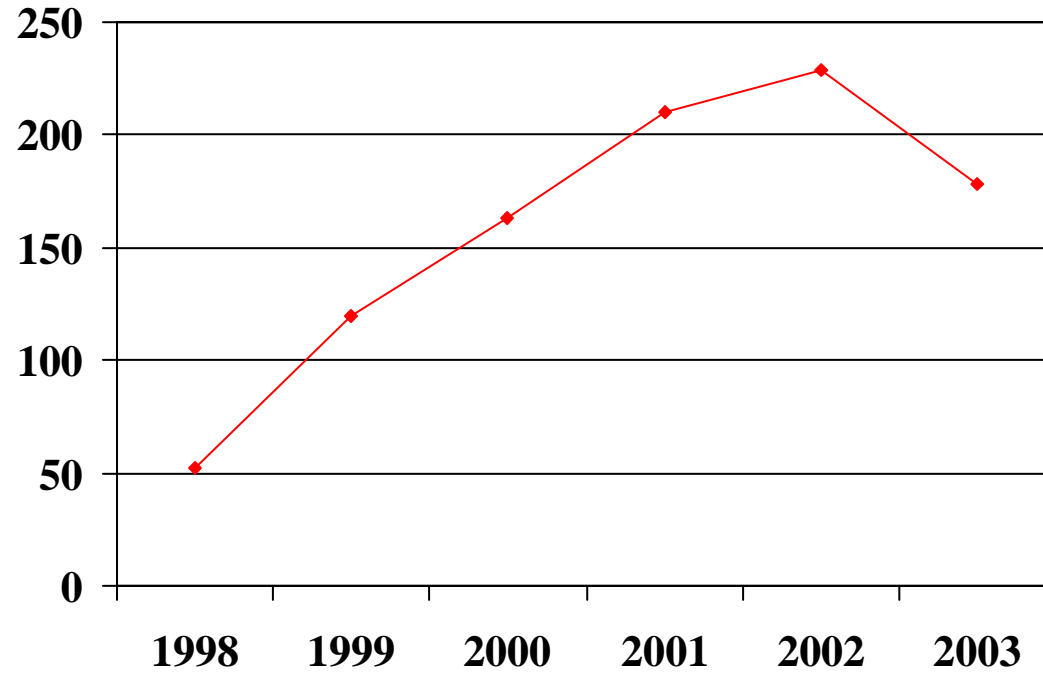
(000)



Totals	1998	-	24,000
	1999	-	24,000
	2000	-	34,000
	2001	-	44,000
	2002	-	48,000
	2003	-	43,500

UK IMPORTS FROM THE FAR EAST (ECU 000)

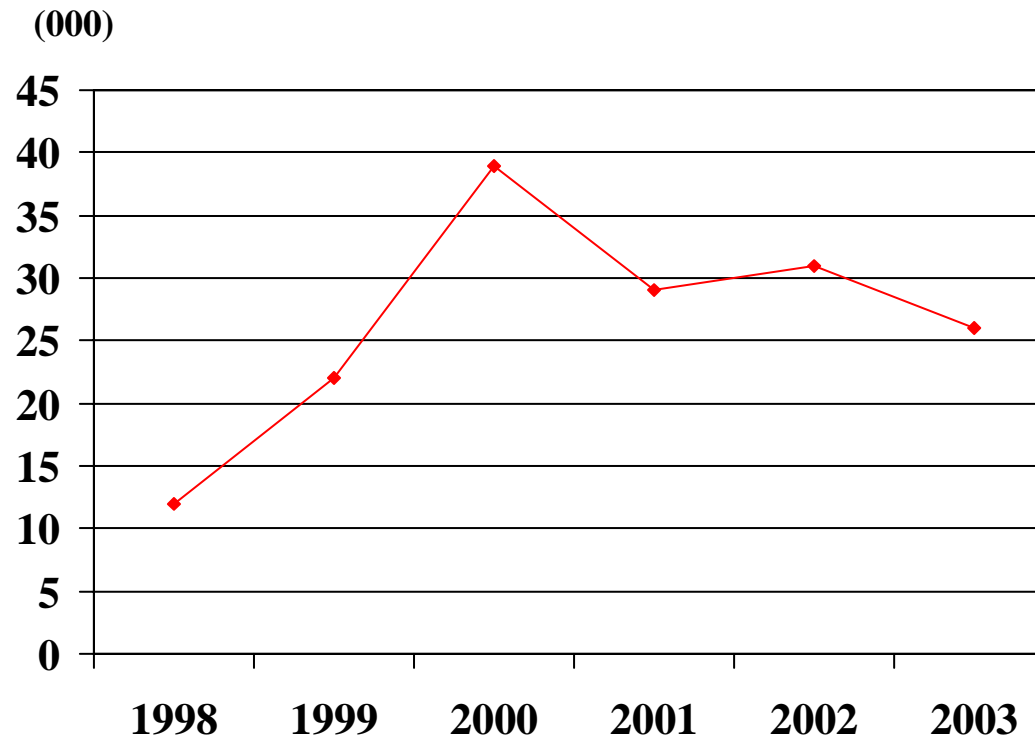
(000)



Totals	1998	-	52,000
	1999	-	120,000
	2000	-	163,000
	2001	-	210,000
	2002	-	229,000
	2003	-	178,000



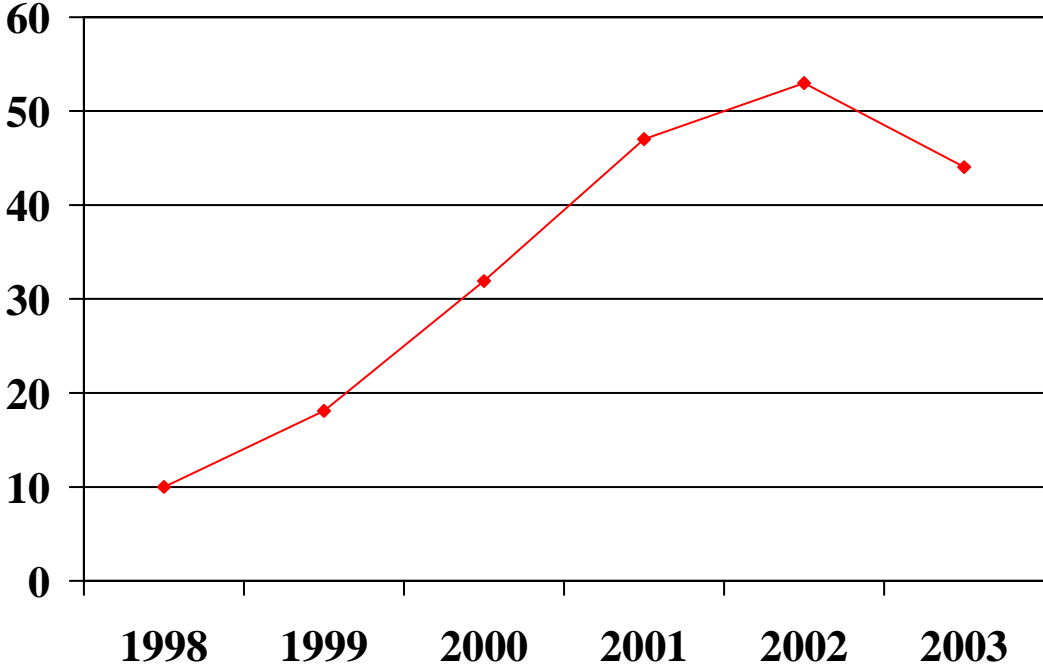
ITALIAN IMPORTS FROM THE FAR EAST (ECU 000)



Totals	1998	-	12,000
	1999	-	22,000
	2000	-	29,000
	2001	-	29,000
	2002	-	31,000
	2003	-	26,000

DUTCH IMPORTS FROM THE FAR EAST (ECU 000)

(000)



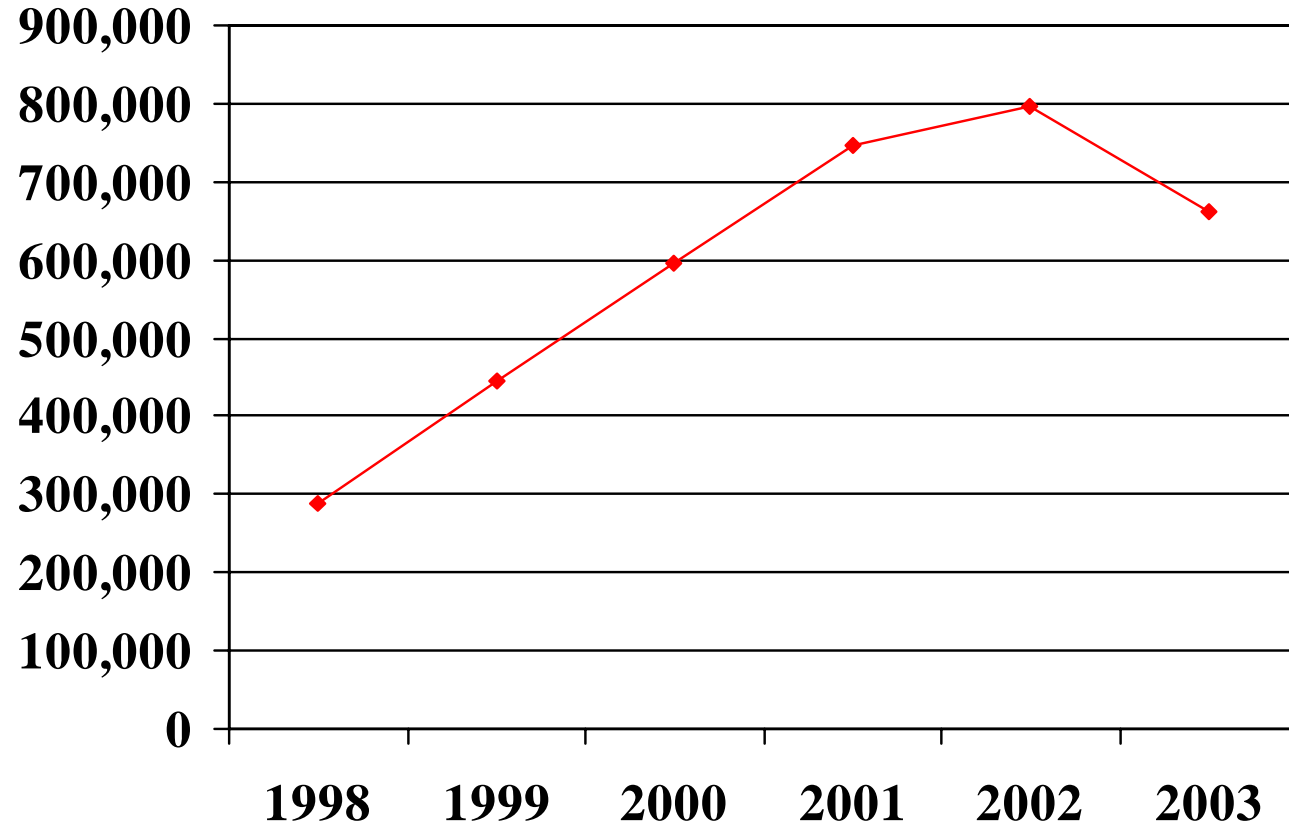
Totals

1998	-	10,000
1999	-	18,000
2000	-	32,000
2001	-	47,000
2002	-	53,000
2003	-	44,000

23-Jun-04



TOTALS A, B and C – ECU 000

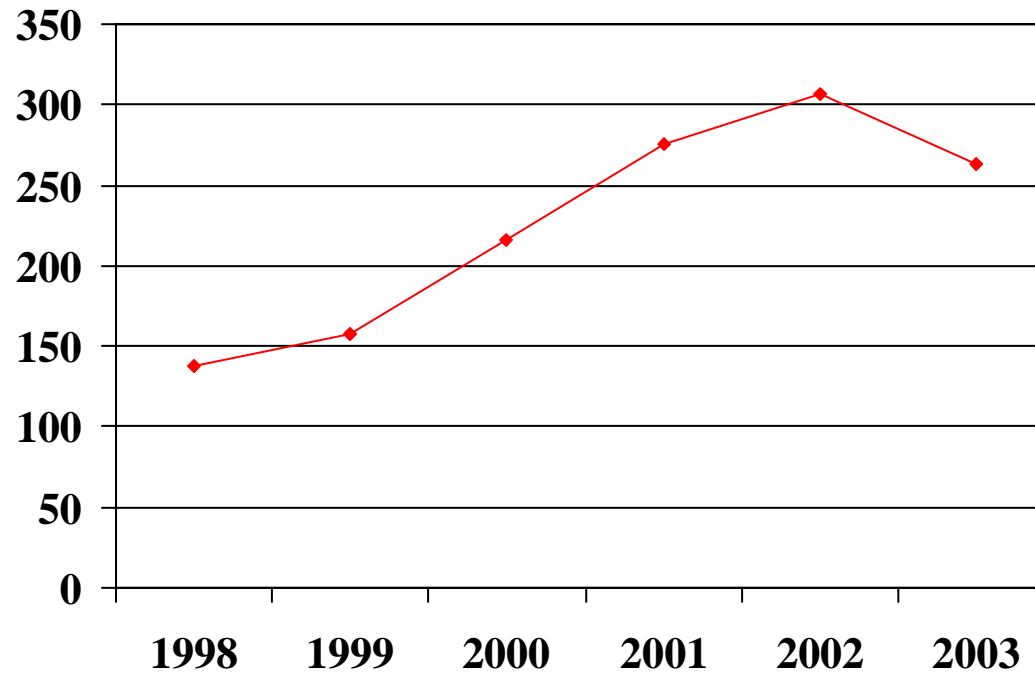


Totals	
1998	290,000
1999	444,000
2000	595,750
2001	746,000
2002	796,250
2003	663,000



GERMANY – TOTALS A, B & C (ECU 000)

(000)



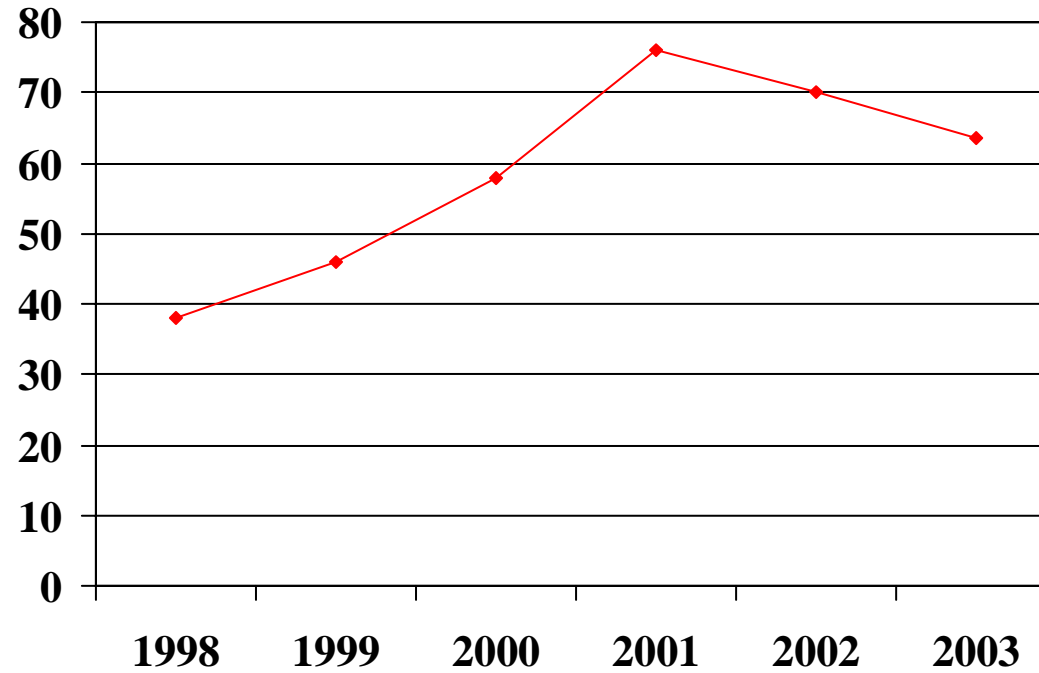
Totals	1998	-	138,000
	1999	-	158,000
	2000	-	216,000
	2001	-	275,000
	2002	-	307,000
	2003	-	263,000

23-Jun-04



FRANCE – TOTALS A, B & C (ECU 000)

(000)



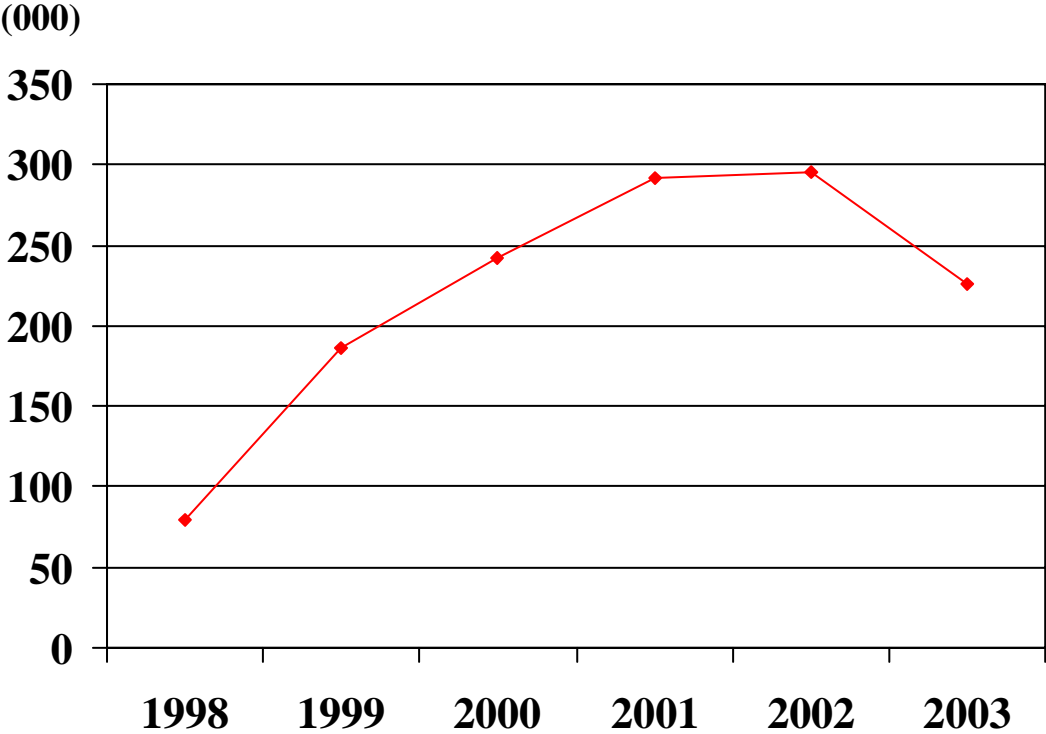
Totals	1998	-	38,000
	1999	-	46,000
	2000	-	58,000
	2001	-	76,000
	2002	-	70,000
	2003	-	63,500

23-Jun-04

29



UK – TOTALS A, B & C (ECU 000)



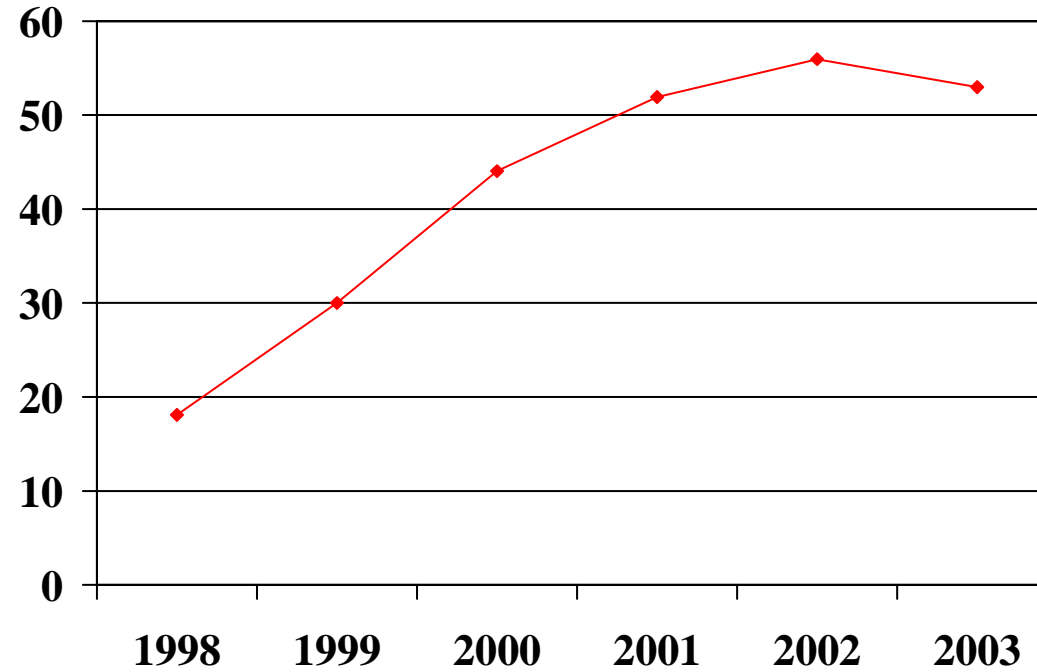
Totals

1998	-	80,000
1999	-	186,000
2000	-	242,000
2001	-	292,000
2002	-	296,000
2003	-	226,000



ITALY – TOTALS A, B & C (ECU 000)

(000)



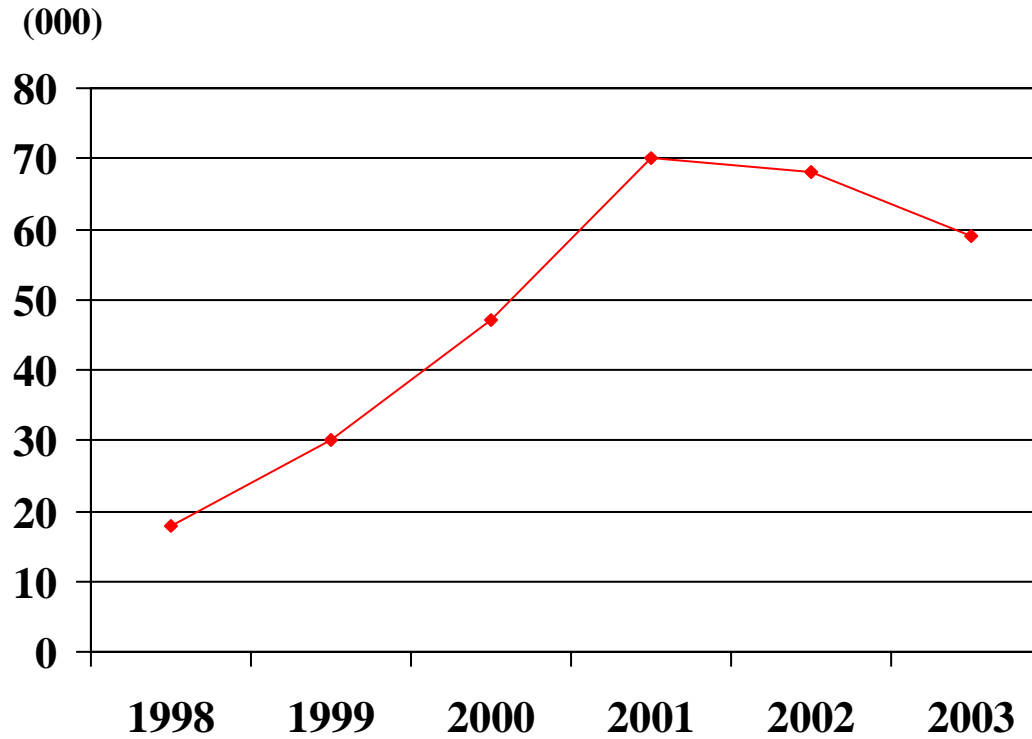
Totals	1998	-	18,000
	1999	-	30,000
	2000	-	44,000
	2001	-	52,000
	2002	-	56,000
	2003	-	53,000

23-Jun-04

31



NETHERLANDS – TOTALS A, B & C (ECU 000)



Totals	1998	-	18,000
	1999	-	30,000
	2000	-	47,000
	2001	-	70,000
	2002	-	68,000
	2003	-	59,000

23-Jun-04

**SUMMARY ON IMPORTS 1999 to 2003
AND PRODUCTION 1998 to 2002**

	YEAR	PRODUCTION	YEAR	TOTAL IMPORTS FROM EEC COUNTRIES	TOTAL IMPORTS FROM OUTSIDE EEC	IMPORT PENETRATION TO DOMESTIC PRODUCTION	IMPORT SHARE OF TOTAL MARKET
F	1998	828,500	1999	181,500	49,500	28%	22%
	1999	861,500	2000	339,500	65,250	47%	32%
	2000	878,500	2001	421,000	86,250	58%	36.6%
	2001	922,500	2002	428,000	92,750	56%	36.1%
	2002	927,500	2003	400,000	62,000	50%	33.25%
D	1998	2,422,000	1999	279,000	131,750	17%	14.5%
	1999	2,426,500	2000	361,250	257,500	25.50%	20.3%
	2000	2,646,500	2001	432,250	319,850	28.4%	22.1%
	2001	2,778,500	2002	411,250	360,250	27.8%	21.8%
	2002	3,477,000	2003	300,000	340,750	18.5%	15.56%
GB	1998	625,000	1999	156,000	116,500	44%	30%
	1999	624,500	2000	268,250	257,500	84%	46%
	2000	758,500	2001	269,750	305,750	76%	43%
	2001	796,500	2002	382,750	329,500	89%	47%
	2002	731,000	2003	320,000	241,750	77%	43.45%

ECU 000 **2001 Production figures are estimated from the 2000 figures.**

SUMMARY ON IMPORTS 1999 to 2003 AND PRODUCTION 1998 to 2002

(Continued)

	YEAR	PRODUCTION	YEAR	TOTAL IMPORTS FROM EEC COUNTRIES	TOTAL IMPORTS FROM OUTSIDE EEC	IMPORT PENETRATION TO DOMESTIC PRODUCTION	IMPORT SHARE OF TOTAL MARKET
I	1998	1,588,000	1999	102,000	24,500	8%	7%
	1999	1,327,000	2000	158,500	55,500	16%	14%
	2000	1,900,000	2001	185,750	64,250	14%	12%
	2001	1,995,000	2002	196,000	64,250	13%	12%
	2002	1,354,000	2003	181,000	61,750	17.92%	15.2%
<hr/>							
NL	1998	105,000	1999	97,000	21,000	100% +	53%
	1999	103,500	2000	159,675	60,250	100% +	68%
	2000	71,000	2001	140,250	80,500	100% +	75%
	2001	74,500	2002	159,250	81,250	100% +	76%
	2002	92,500	2003	148,250	63,000	100% +	69.5%

ECU 000

The 2001 Production figures are estimated from the 2000 figures.

EEC INTERNATIONAL TRADE

EC 000	Inter EC Trade			Imports from Outside EEC			Exports out side EEC		
	1999	2002	2003	1999	2002	2003	1999	2002	2003
Padlock									
83011000	48,200	45,500	41,330	61,750	76,750	64,260	29,740	34,000	31,280
Cylinders									
83014011	98,490	118,750	126,070	62,760	38,250	34,010	72,220	86,750	70,220
Locks									
83014019	76,900	97,250	99,120	24,525	34,250	30,920	47,585	70,000	66,230
Locks									
83014090	65,190	108,750	108,020	91,475	117,500	95,540	80,925	102,000	89,060
Keys									
83017000	75,430	71,250	73,650	8,715	17,750	16,110	31,565	46,750	45,690
Hinges									
83021090	281,070	522,000	443,930	88,530	177,500	193,050	278,000	450,500	374,730
Door Fittings									
8304100	1,172,366	1,475,500	1,475,500	270,445	465,500	496,700	638,351	819,625	821,680
Door Fittings									
83024990	314,583	190,000	187,080	89,150	130,500	99,260	185,498	138,875	147,220
Door Closers									
83026090	307,175	277,500	261,240	134,295	99,000	88,670	244,125	162,250	161,230
Totals	2,439,404	2,906,500	2,482,200	831,645	1,157,000	1,118,520	1,608,010	1,910,750	1,807,340

After consideration 50% of 83024990 has been added to 8304100



COMPARISON SUMMARY IN PERCENTAGES (BASED ON EURO FIGURES)

	Imports from Outside the EEC		Exports Outside the EEC	
	1999/2002	1999/2003	1999/2002	1999/2003
Padlock 83011000	+24%	+4%	+11%	+5%
Cylinders 8301 4011	-39%	-46%	+21%	+3%
Locks 8301 4019	+41%	+26%	+46%	+39%
Locks 830 14090	+27%	+5%	+32%	+10%
Keys 830 17000	+100%	+85%	+48%	+45%
Hinges 830 21090	+100%	+118%	+62%	+35%
Door Fittings 830 4100	+45%	+84%	+50%	+29%
Door Fittings 820 24990	+46%	+113%	-25%	-21%
Door Closers 830 26090	-26%	-34%	-33%	-34%
Totals	+39%	+34.5%	+19%	+13%

PRODUCTION 2002 EUR 000

Czech Republic	19,075
Hungary	57,778
Poland	21,184
Total	98,037

IMPORTS/EXPORTS CZECH REPUBLIC, HUNGARY, POLAND – 2003

ECU 000	Exports to EEC 2003				Imports from EEC 2003			
	Czech	Hungary	Poland	Total	Czech	Hungary	Poland	Total
Ref.								
Padlock 1100	360	0	64	424	356	357	386	1,099
Cylinders 4011	1,635	614	1,408	3,657	1,616	963	4,690	7,269
Locks 1019	186	3,059	163	3,408	4,008	2,679	3,691	10,378
Locks 4090	3,716	2,658	1,050	7,424	4,836	2,917	6,671	14,424
Keys 7000	381	5,116	1,401	6,898	2,087	2,488	1,278	5,853
Hinges 1090	24,222	456	1,401	26,079	16,041	5,553	25,012	46,606
Door fittings 4100	25,398	41,755	41,916	109,069	57,765	58,840	162,213	278,818
Door fittings 4990	1,774	3,454	6,254	11,482	13,050	6,536	10,392	29,978
Door closers 6090	454	147	3,210	3,811	8,114	5,850	12,760	26,724
	58,126	57,259	56,867	172,252	107,873	86,183	227,093	421,149

IMPORTS/EXPORTS NORWAY AND SWITZERLAND – 2003

ECU 000	Exports to EEC 2003		Imports from EEC 2003	
	Norway	Switzerland	Norway	Switzerland
Padlock 1100	110	661	1,632	2,013
Cylinders 4011	2,674	8,823	4,693	5,311
Locks 1019	3,209	2,530	1,344	4,796
Locks 4090	6,759	5,090	3,948	4,590
Keys 7000	93	2,502	1,446	1,547
Hinges 1090	3,443	12,290	8,274	19,936
Door fittings 4100	4,231	28,309	24,807	58,044
Door fittings 4990	1,330	6,618	9,992	18,464
Door closers 6090	425	3,293	4,595	10,988
	22,274	70,116	60,731	125,689

SUMMARY OF IMPORTS & EXPORTS (ALL EEC COUNTRIES) ECU 000

	1999	2000	2001	2002	2003	Percentage charge 1999-2003
Inter EEC Trade	2,439,405	2,305,250	2,748,400	2,906,500	2,482,200	+2%
Imports from Outside the EEC	831,645	889,500	1,077,000	1,157,000	1,118,520	+34.5%
Exports Outside the EEC	1,608,010	1,506,750	1,829,250	1,910,750	1,807,340	+13%

SUMMARY OF FINDINGS – ECU 000

	1998	1999	2000	2001	2002
Production - In EC	6,972,000	6,934,000	7,874,750	8,268,487	8,250,857
Inter EC trade as % of Production	41.75%	35%	35%	35%	30%
Imports from outside the EC as percentage of production	14%	12%	13.7%	14%	13.5%
Exports outside the EC as % of production	31.5%	23%	23%	23%	22%
Imports from outside the EC as % of exports outside the EC	52%	59%	59%	60%	62%

Note: The Import Export figures are for a 12 month later period than production. Please also note that in view of well published problems within Eurostat they ceased to provide information after May 2003. At that point the 2001 production figures had not been finalised by Eurostat. To maintain comparative figures the 2000 production figures have been used plus 5%.

CONCLUSIONS

- With the suspension of Eurostat in June 2003 it has been necessary to find an alternative provider. The sources remain the same, but they depend on the quality of input from countries and unexplained anomalies occur.
- A major influence in 2003 has been the weakness of the US Dollar. This is especially important when considering imports from the Far East which are generally invoiced in the US \$.
- From 31st December 2001 to 31st December 2003 the US \$ declined by 45% against the Euro and 25% against sterling. In all areas the statistics are heavily influenced by the increasing strength of the Euro and the pound.

CONCLUSIONS

- It is difficult to judge how much the volumes from the Far East have increased; it is also probably at the expense of the exporting companies.
- The reduction of imports from the 'Old East' is noteworthy.
- For the first time EFTA countries imports and exports have been included, which shows them to be heavy nett importers, as are the three new EC countries who are ARGE members.

THE OVERALL SUMMARY DEMONSTRATES:-

- EC inter country trade as stagnant (The barriers remain?).
- Imports from outside the EC grow faster than exports, but both remain constant against EC production.